

MICKEY THOMPSON

M/T

TIRES & WHEELS

2025 PRODUCT CATALOG



DEFY LIMITS

FOR MORE THAN SIX DECADES, THE NAME MICKEY THOMPSON HAS BEEN SYNONYMOUS WITH BREAKING BOUNDARIES AND CHALLENGING CONVENTIONS. WE DON'T JUST **DEFY LIMITS** – WE OBLITERATE THEM. BORN FROM THE SPIRIT OF COMPETITION, OUR INNOVATIONS SET THE STANDARD FOR PERFORMANCE AND DURABILITY.

TABLE OF CONTENTS

LIGHT TRUCK TIRES

BAJA BOSS® A/T	4
BAJA BOSS® M/T	6
BAJA LEGEND EXP™	8
BAJA LEGEND MTZ™	10

EXTREME TIRES

BAJA PRO™ XS	14
BAJA PRO™ X	15
BAJA PRO™ X (SXS)	16
BAJA BOSS® XS	17
BAJA BOSS® X	18
LT TIRE COMPOUND	19
LT TIRE CONSTRUCTION	19

DRAG TIRES

ET DRAG®	22
ET DRAG® PRO DRAG RADIAL	24
PRO BRACKET RADIAL	25
ET STREET® R BIAS	26
ET STREET® FRONT	27
ET STREET® R	28
ET STREET® RADIAL PRO	29
ET STREET® S/S®	30
ET FRONT™	31
ET JR.®	32
ET DRAG® MOTORCYCLE	32
M/T® NATURAL RUBBER TIRES	33
DRAG TIRE COMPOUND	33
DRAG TIRE CONSTRUCTION	33

STREET TIRES

STREET COMP™	36
SPORTSMAN S/T™	37
SPORTSMAN FRONT™	38
SPORTSMAN S/R™	39

NEW MT PRO SERIES WHEELS

MT CLASSIC PRO	42
MT CANYON PRO	44
MT OPEN 5	46

MT CLASSIC SERIES WHEELS

MT CANYON	47
CLASSIC III™	48
SIDEBITER II®	50
CLASSIC BAJA LOCK™	51
REPLACEMENT CAPS	52
TIRE/WHEEL WARRANTY	54
NOTES	56

LIGHT TRUCK TIRES

A VAST RANGE OF FITMENTS FOR ALL OF YOUR ON AND OFF-ROAD NEEDS. FROM WEEKEND WARRIORS TO FULLY DECKED OUT OFF-ROAD RIGS, OUR LIGHT TRUCK TIRES ARE PURPOSE BUILT FOR EVERY TERRAIN AND EVERY ADVENTURE. SEE YOU OUT THERE!



BAJA BOSS® A/T

PREMIUM HYBRID ALL-TERRAIN - R/T

PREMIUM ON-ROAD OFF-ROAD SNOW



TIRE FEATURES



50K MILE (LT SIZES) and 60K MILE (SUV SIZES) LIMITED TREADWEAR WARRANTY* instills confidence that the Baja Boss® A/T is built to last



THREE-PEAK MOUNTAIN SNOWFLAKE DESIGNATION on all sizes 12.50 (315) and narrower



T1 COMPOUND (LT SIZES) and S1 COMPOUND (SUV SIZES) provides excellent wet handling/braking, lasting tread life, and cold/wet weather traction



POWERPLY™ XD adds heavier denier cord to the angled third ply, providing improved puncture resistance, quicker steering response, and greater stability (LT sizes only)



EXTREME SIDEBITERS® 150% deeper than the Baja Legend EXP™ for a bold look and extreme off-road traction/protection (LT sizes only)



ASYMMETRIC TREAD PATTERN is optimized for reduced noise, off-road traction, and on-road handling

The **BAJA BOSS® A/T** delivers premium on-road handling, performance, and treadlife while helping to provide traction in all terrains and any weather condition thanks to the pioneering asymmetric tread design, silica-reinforced compound, extreme Sidebiters® and revolutionary PowerPly XD™. Featuring a 50,000-mile (LT Sizes) treadwear warranty and 3PMS designation, it's Mickey Thompson's most innovative hybrid A/T to date – aggressive looks, low noise, long-lasting tread, and smooth ride.

WHEEL DIAMETER	MATERIAL NUMBER	PRODUCT CODE	TIRE SIZE	EQUIVALENT SIZE	LOAD RANGE	SIDE WALL	SERVICE DESC.	(MEAS. RIM WIDTH) APPD. RIM WIDTH INCHES	MAX. INFL. PSI	MAX. LOAD LBS.*	OVERALL DIAMETER INCHES	SECTION WIDTH INCHES	TREAD WIDTH INCHES	TREAD DEPTH 32NDS	APPROX. WEIGHT LBS.
15"	249344	340007003	235/75R15	29X9.00R15	XL	BLK	109T	(6.5) 6.0-8.0	50	2,271	28.8	9.2	6.7	16.0	36
	247497	340001003	265/70R16	31X10.50R16	STD	BLK	112T	(8.0) 7.0-9.0	44	2,469	30.8	10.5	8.6	16.0	42
16"	249345	340008003	265/75R16	32X10.50R16	STD	BLK	116T	(7.5) 7.0-9.0	44	2,756	31.7	10.6	7.7	16.0	42
	247455	331004001	LT265/75R16	32X10.50R16LT	E	BLK	123Q	(7.5) 7.0-9.0	80	3,415	32.0	10.7	8.2	18.5	57
	247464	331013001	LT285/75R16	33X11.50R16LT	E	BLK	126Q	(8.0) 7.5-9.5	80	3,750	32.9	11.7	9.3	18.5	66
	249346	340009003	245/65R17	30X9.50R17	XL	BLK	111T	(7.0) 7.0-9.5	50	2,403	29.8	9.7	7.7	16.0	38
17"	247348	331001001	LT265/65R17	31X10.50R17LT	E	BLK	120Q	(8.0) 7.5-9.5	80	3,085	30.5	10.7	8.7	18.5	57
	247499	340016003	265/70R17	32X10.50R17	XL	BLK	116T	(8.0) 7.0-9.0	50	2,756	31.9	10.4	8.6	16.0	44
	247454	331003001	LT265/70R17	32X10.50R17LT	E	BLK	121Q	(8.0) 7.0-9.0	80	3,195	31.9	10.7	8.7	18.5	57
	247502	340020003	285/70R17	33X11.50R17	STD	BLK	116T	(8.5) 7.5-9.5	44	2,756	32.8	11.6	8.9	16.0	48
	272481	331285001	LT285/70R17	33X11.50R17LT	E	BLK	121Q	(8.5) 7.5-9.5	80	3,195	33.0	11.5	9.3	18.5	63
	247463	331012001	33X12.50R17LT	-	D	BLK	114Q	(10.0) 8.5-11.0	50	2,600	32.8	12.0	10.3	18.5	68
	247462	331011001	LT305/65R17	33X12.50R17LT	E	BLK	121Q	(9.0) 8.5-11.0	65	3,195	32.8	12.0	10.3	18.5	67
	247472	331021001	LT295/70R17	34X12.00R17LT	E	BLK	121Q	(8.5) 7.5-10.0	80	3,195	33.7	12.1	10.2	18.5	72
	247480	331030001	LT255/85R17	35X10.00R17LT	E	BLK	121Q	(7.0) 6.5-8.0	80	3,195	34.6	10.1	8.6	18.5	64
	272568	331309001	35X12.50R17LT	-	D	BLK	119Q	(10.0) 8.0-11.0	50	3,000	34.5	12.8	10.3	18.5	69
18"	247463	331311001	LT315/70R17	35X12.50R17LT	E	BLK	121Q	(9.5) 8.0-11.0	65	3,195	34.5	12.8	10.3	18.5	71
	247490	331040001	37X12.50R17LT	-	D	BLK	124Q	(10.0) 8.0-11.0	50	3,525	36.7	13.0	10.3	18.5	80
	247496	340014003	265/60R18	31X10.50R18	XL	BLK	114T	(8.0) 7.5-9.5	50	2,601	30.8	10.6	9.0	16.0	44
	247453	331020001	LT265/60R18	31X10.50R18LT	E	BLK	119Q	(8.0) 7.5-9.5	80	3,000	30.8	10.7	8.6	18.5	57
	247498	340015003	265/65R18	32X10.50R18	XL	BLK	116T	(8.0) 7.5-9.5	50	2,756	31.5	10.7	8.5	16.0	45
	249347	340010003	275/65R18	32X11.00R18	STD	BLK	116T	(8.0) 7.5-9.5	44	2,756	32.4	10.9	8.7	16.0	46
	247470	331019001	LT275/70R18	33X11.00R18LT	E	BLK	125Q	(8.0) 7.0-9.0	80	3,640	33.4	10.8	9.6	18.5	66
	247467	331016001	LT285/65R18	33X11.50R18LT	E	BLK	125Q	(8.5) 8.0-10.0	80	3,640	33.2	10.9	10.0	18.5	64
	247459	331008001	33X12.50R18LT	-	E	BLK	118Q	(10.0) 8.5-11.0	65	2,910	32.6	11.9	10.3	18.5	67
	247458	331007001	LT305/60R18	33X12.50R18LT	F	BLK	126Q	(9.0) 8.5-11.0	80	3,750	32.6	11.9	10.3	18.5	68
20"	247479	331029001	LT295/70R18	34X12.00R18LT	E	BLK	129Q	(8.5) 7.5-10.0	80	4,080	34.5	11.7	10.2	18.5	73
	247483	331033001	35X12.50R18LT	-	D	BLK	118Q	(10.0) 8.5-11.0	50	2,910	34.6	12.8	10.3	18.5	73
	247489	331039001	LT305/70R18	35X12.50R18LT	E	BLK	126Q	(9.0) 8.0-10.0	65	3,750	35.3	12.2	10.3	18.5	75
	247495	340013003	265/50R20	31X10.50R20	XL	BLK	111T	(8.5) 7.5-9.5	50	2,403	30.4	10.7	9.3	16.0	43
	247500	340018003	275/55R20	32X11.00R20	XL	BLK	117T	(8.5) 7.5-9.5	50	2,833	32.2	11.1	9.5	16.0	48
	247456	331005001	LT275/55R20	32X11.00R20LT	E	BLK	120Q	(8.5) 7.5-9.5	80	3,085	32.2	10.9	10.0	18.5	63
	249348	340011003	305/50R20	32X12.50R20	XL	BLK	120T	(9.5) 8.5-11.0	50	3,086	32.2	12.0	10.4	16.0	51
	247503	340021003	275/60R20	33X11.00R20	STD	BLK	115T	(8.0) 7.5-9.5	44	2,679	33.4	10.8	9.2	16.0	47
	247469	331018001	LT275/60R20	33X11.00R20LT	E	BLK	123Q	(8.0) 7.5-9.5	80	3,415	33.4	10.8	9.6	18.5	64
	272483	331294001	LT285/55R20	33X11.50R20LT	E	BLK	122Q	(9.0) 8.0-10.0	80	3,305	32.7	11.5	9.7	18.5	62
22"	247468	331017001	LT295/55R20	33X12.00R20LT	E	BLK	123Q	(9.5) 8.0-10.5	80	3,415	33.2	12.0	10.3	18.5	67
	247461	331010001	33X12.50R20LT	-	E	BLK	114Q	(10.0) 8.5-11.0	65	2,600	32.8	12.2	10.3	18.5	68
	247473	331022001	LT305/55R20	33X12.50R20LT	F	BLK	125Q	(9.5) 8.5-11.0	80	3,640	33.7	12.2	10.3	18.5	70
	247457	331006001	33X13.50R20LT	-	F	BLK	120Q	(11.0) 9.5-12.0	80	3,085	32.5	13.5	11.4	18.5	73
	247478	331028001	LT275/65R20	34X11.00R20LT	E	BLK	126Q	(8.0) 7.5-9.5	80	3,750	34.5	10.8	9.6	18.5	65
	247471	331020001	LT285/60R20	34X11.50R20LT	E	BLK	125Q	(8.5) 8.0-10.0	80	3,640	33.6	11.3	9.2	18.5	67
	247474	331023001	LT295/60R20	34X12.00R20LT	E	BLK	126Q	(8.5) 8.0-10.5	80	3,750	34.3	11.6	10.2	18.5	69
	247482	331032001	LT285/65R20	35X11.50R20LT	E	BLK	127Q	(8.5) 8.0-10.0	80	3,860	34.6	11.5	9.7	18.5	69
	247485	331035001	35X12.50R20LT	-	F	BLK	125Q	(10.0) 8.5-11.0	80	3,640	34.7	12.4	10.3	18.5	73
	247477	331026001	35X13.50R20LT	-	F	BLK	126Q	(11.0) 9.5-12.0	80	3,750	34.5	13.3	11.4	18.5	80
24"	247484	331034001	35X15.50R20LT	-	F	BLK	127Q	(12.5) 11.0-14.0	80	3,860	34.6	15.4	12.6	18.5	83
	247491	331041001	37X12.50R20LT	-	E	BLK	126Q	(10.0) 8.5-11.0	65	3,750	36.7	12.6	10.3	18.5	80
	247492	331042001	37X13.50R20LT	-	E	BLK	127Q	(11.0) 8.5-12.0	65	3,860	36.7	13.5	11.1	18.5	87
	247501	340019003	285/45R22	32X11.50R22	XL	BLK	114T	(9.5) 9.0-10.5	50	2,601	32.3	11.3	9.9	16.0	49
	249349	340012003	305/45R22	33X12.50R22	XL	BLK	118T	(10.0) 9.5-11.5	50	2,910	33.0	11.9	10.4	16.0	52
	247466	331015001	33X12.50R22LT	-	F	BLK	114Q	(10.0) 8.5-11.0	80	2,600	33.0	12.0	10.3	18.5	67
	247481	331031001	LT285/55R22	35X11.50R22LT	E	BLK	124Q	(9.0) 8.0-10.0	80	3,525	34.6	11.5	9.7	18.5	68
	247487	331037001	35X12.50R22LT	-	F	BLK	121Q	(10.0) 8.5-11.0	80	3,195	34.9	12.1	10.3	18.5	75
	247488	331038001	LT325/50R22	35X13.00R22LT	F	BLK	127Q	(10.0) 9.0-12.0	80	3,860	35.0	12.8	11.9	18.5	80
	247486	331036001	35X15.50R22LT	-	F	BLK	123Q	(13.0) 12.5-14.5	80	3,415	34.7	15.2	12.7	18.5	83
247493	331043001	37X13.50R22LT	-	F	BLK	128Q	(11.0) 8.5-12.0	80	3,970	36.8	13.3	11.1	18.5	86	
24"	250092	331250001	35X15.50R24LT	-	F	BLK	117Q	(14.0) 13.0-15.5	80	2,835	34.7	15.6	12.7	18.5	81
247494	331044001	37X13.50R24LT	-	F	BLK	124Q	(11.0) 8.5-12.0	80	3,525	36.8	13.6	11.1	18.5	86	

*MAX LOAD DATA IS FOR SINGLE REAR TIRE APPLICATIONS.

ALL SPECIFICATIONS SUBJECT TO CHANGE WITHOUT NOTICE.

• INCREASED-LOAD LT-METRIC OPTIONS FOR HEAVY DUTY APPLICATIONS. • APPROVED FOR THE INCREASING POPULAR 12" AND/OR 14" WIDE WHEELS.

• LOWER-LOAD FLOTATION OPTIONS FOR JEEPS, 1/2-TONS & OFF-ROAD. • SUV SIZES ARE A LIGHTER-DUTY ALTERNATIVE TO LT OFFERINGS.



BAJA BOSS® M/T

PREMIUM EXTREME MUD-TERRAIN

 ON-ROAD
  EXTREME OFF-ROAD
  COMPETITION



TIRE FEATURES



ASYMMETRIC TREAD PATTERN is optimized for reduced noise, off-road traction, and on-road handling



EXTRA LARGE FOUR-PITCH SIDEBITERS® for enhanced off-road traction



POWERPLY™ XD adds an extra thick denier cord to the angled third ply for better puncture resistance, quicker steering response, and greater stability



STONE EJECTOR RIBS prevent gravel from being wedged into tread grooves



T4 SILICA-REINFORCED COMPOUND designed to provide excellent wet handling/braking performance, cut and chip resistance, and lasting treadlife

The **BAJA BOSS® M/T** is Mickey Thompson's definitive premium mud terrain featuring a cutting-edge asymmetric tread pattern optimized for reduced noise, off-road traction, and on-road handling; extreme Sidebiters® for off-road traction and protection; Powerply™ XD 3-Ply construction for sidewall puncture resistance and handling; and silica-reinforced compound for on-road tread wear, wet performance, and durability. The Baja Boss® M/T is competition-proven to provide the ultimate off-road experience with premium on-road handling.

WHEEL DIAMETER	MATERIAL NUMBER	PRODUCT CODE	TIRE SIZE	EQUIVALENT SIZE	LOAD RANGE	SIDE WALL	SERVICE DESC.	(MEAS. RIM WIDTH) APPD. RIM WIDTH INCHES	MAX. INFL. PSI	MAX. LOAD LBS.*	OVERALL DIAMETER INCHES	SECTION WIDTH INCHES	TREAD WIDTH INCHES	TREAD DEPTH 32NDS	APPROX. WEIGHT LBS.
15"	247876	331091004	33X12.50R15LT	-	C	BLK	108Q	(10.0) 8.0-11.0	35	2,205	32.7	12.2	9.8	21.0	60
	247887	331102004	35X12.50R15LT	-	C	BLK	113Q	(10.0) 8.0-11.0	35	2,535	34.6	13.1	10.1	21.0	71
16"	247879	331094004	LT285/75R16	33X11.50R16LT	E	BLK	126Q	(8.0) 7.5-9.5	80	3,750	33.0	11.2	8.8	19.0	63
	247885	331100004	LT315/75R16	35X12.50R16LT	E	BLK	127Q	(8.5) 8.0-11.0	65	3,860	34.5	12.6	9.7	20.5	73
17"	247881	331096004	LT285/70R17	33X11.50R17LT	E	BLK	121Q	(8.5) 7.5-9.5	80	3,195	33.0	11.5	9.0	19.0	63
	247880	331095004	33X12.50R17LT	-	D	BLK	114Q	(10.0) 8.5-11.0	50	2,600	33.0	12.3	10.4	21.0	67
	247874	331089004	LT305/65R17	33X12.50R17LT	E	BLK	121Q	(9.0) 8.5-11.0	65	3,195	32.7	12.3	9.9	21.0	67
	272562	331309004	35X12.50R17LT	-	D	BLK	119Q	(10.0) 8.0-11.0	50	3,000	34.8	12.5	10.0	21.0	71
	272566	331311004	LT315/70R17	35X12.50R17LT	E	BLK	121Q	(9.5) 8.0-11.0	65	3,195	34.6	12.6	10.0	21.0	70
	247896	331111004	37X12.50R17LT	-	D	BLK	124Q	(10.0) 8.0-11.0	50	3,525	36.8	13.0	10.2	22.0	79
18"	247903	331118004	40X13.50R17LT	-	C	BLK	121Q	(11.0) 8.5-11.5	35	3,195	39.8	13.6	11.0	22.0	92
	249341	331195004	42X13.50R17LT	-	C	BLK	126P	(11.0) 9.0-11.5	35	3,750	41.9	14.2	11.3	22.0	102
	247883	331098004	LT285/65R18	33X11.50R18LT	E	BLK	125Q	(8.5) 8.0-10.0	80	3,640	33.4	11.2	9.5	19.0	64
	247875	331090004	33X12.50R18LT	-	E	BLK	118Q	(10.0) 8.5-11.0	65	2,910	32.7	12.8	10.6	21.0	67
	247873	331088004	LT305/60R18	33X12.50R18LT	F	BLK	126Q	(9.0) 8.5-11.0	80	3,750	32.7	12.4	10.1	21.0	68
	247891	331106004	35X12.50R18LT	-	D	BLK	118Q	(10.0) 8.5-11.0	50	2,910	34.8	12.5	10.1	21.0	73
20"	272469	331294004	LT285/55R20	33X11.50R20LT	E	BLK	122Q	(9.0) 8.0-10.0	80	3,305	32.6	11.7	9.3	18.5	63
	247882	331097004	LT295/55R20	33X12.00R20LT	E	BLK	123Q	(9.5) 8.0-10.5	80	3,415	33.1	12.3	10.2	20.0	68
	247877	331092004	33X12.50R20LT	-	E	BLK	114Q	(10.0) 8.5-11.0	65	2,600	32.7	12.2	10.7	21.0	68
	247884	331099004	LT305/55R20	33X12.50R20LT	F	BLK	125Q	(9.5) 8.5-11.0	80	3,640	33.5	12.2	10.4	20.5	70
	247872	331087004	33X13.50R20LT	-	F	BLK	120Q	(11.0) 9.5-12.0	80	3,085	32.6	13.3	11.4	21.0	73
	247889	331104004	35X12.50R20LT	-	F	BLK	125Q	(10.0) 8.5-11.0	80	3,640	34.7	12.4	10.2	21.0	73
22"	247888	331103004	35X13.50R20LT	-	F	BLK	126Q	(11.0) 9.5-12.0	80	3,750	34.6	13.2	11.1	21.0	81
	247895	331110004	37X12.50R20LT	-	E	BLK	126Q	(10.0) 8.5-11.0	65	3,750	36.7	12.6	10.3	21.0	79
	247897	331112004	37X14.50R20LT	-	E	BLK	128Q	(11.5) 10.0-13.0	65	3,970	36.9	14.5	10.8	21.0	89
	247901	331116004	38X15.50R20LT	-	E	BLK	128Q	(12.5) 11.0-14.0	65	3,970	37.8	15.4	12.3	21.0	95
	249342	331197004	42X13.50R20LT	-	D	BLK	128Q	(11.0) 9.0-11.5	50	3,970	41.8	13.8	11.3	22.0	104
	249343	331199004	44X13.50R20LT	-	C	BLK	128Q	(11.0) 9.0-11.5	35	3,970	43.8	13.8	11.3	22.0	111
24"	247878	331093004	33X12.50R22LT	-	F	BLK	114Q	(10.0) 8.5-11.0	80	2,600	32.7	12.3	10.9	21.0	68
	247892	331107004	35X12.50R22LT	-	F	BLK	121Q	(10.0) 8.5-11.0	80	3,195	34.8	12.3	10.4	21.0	76
	247894	331109004	LT325/50R22	35X13.00R22LT	F	BLK	127Q	(10.0) 9.0-12.0	80	3,860	35.1	12.9	11.4	21.0	80
	247898	331113004	37X13.50R22LT	-	F	BLK	128Q	(11.0) 8.5-12.0	80	3,970	36.9	13.4	10.8	21.0	82
24"	247900	331115004	38X15.50R22LT	-	E	BLK	128Q	(12.5) 11.0-14.0	65	3,970	37.8	15.5	12.3	21.0	94
	247899	331114004	37X14.50R24LT	-	F	BLK	125Q	(11.5) 10.0-13.0	80	3,640	37.0	14.1	10.8	21.0	88
	247902	331117004	38X15.50R24LT	-	F	BLK	128Q	(12.5) 11.0-14.0	80	3,970	38.0	14.9	12.3	21.0	95

*MAX LOAD DATA IS FOR SINGLE REAR TIRE APPLICATIONS.

ALL SPECIFICATIONS SUBJECT TO CHANGE WITHOUT NOTICE.

• INCREASED-LOAD LT-METRIC OPTIONS FOR HEAVY DUTY APPLICATIONS. • APPROVED FOR THE INCREASING POPULAR 12" AND/OR 14" WIDE WHEELS.

• LOWER-LOAD FLOTATION OPTIONS FOR JEEPS, 1/2-TONS & OFF-ROAD.

BAJA LEGEND EXP™

HYBRID ALL-TERRAIN - R/T



PREMIUM ON-ROAD



TRAIL



TIRE FEATURES



LIMITED TREADWEAR WARRANTY
instills confidence that the Baja Legend EXP™ is built to last



LEGENDARY "BAJA INSPIRED" TREAD STYLING
with large surface area tread elements, wide voids for an aggressive appearance, and great on/off-road performance



T4 SILICA-REINFORCED COMPOUND
provides excellent wet handling/braking performance, cut and chip resistance, and lasting treadlife



NEXT-GEN LIGHTWEIGHT HIGH TENSILE BODY PLYS
provides a smooth ride and durability



OPTIMIZED TREAD DESIGN AND GEOMETRY
help to reduce noise

The **BAJA LEGEND EXP™** hybrid all-terrain was developed with a blend of premium materials and legendary design to provide a balance of on-road performance and off-road traction. Featuring legendary Mickey Thompson Sidebiters®, large surface area tread elements and wide voids provide the ultimate on-road and trail performance. T4 silica-reinforced compound provides excellent wet handling, durability, and tread life. Our next-gen high tensile body ply construction provides a smooth ride and durability in a lightweight package. Backed by a limited treadwear warranty, the Baja Legend EXP™ is designed to provide maximum performance on and off the road.

WHEEL DIAMETER	MATERIAL NUMBER	PRODUCT CODE	TIRE SIZE	EQUIVALENT SIZE	LOAD RANGE	SIDE WALL	SERVICE DESC.	(MEAS. RIM WIDTH) APPD. RIM WIDTH INCHES	MAX. INFL. PSI	MAX. LOAD LBS.*	OVERALL DIAMETER INCHES	SECTION WIDTH INCHES	TREAD WIDTH INCHES	TREAD DEPTH 32NDS	APPROX. WEIGHT LBS.
15"	247530	331055003	31X10.50R15LT	-	C	RWL	109Q	(8.5) 7.0-9.0	50	2,270	30.8	10.9	8.2	18.5	45
	247541	331066003	33X12.50R15LT	-	C	RWL	108Q	(10.0) 8.0-11.0	35	2,205	32.9	12.1	9.8	18.5	55
	247557	331082003	35X12.50R15LT	-	C	RWL	113Q	(10.0) 8.0-11.0	35	2,595	34.9	12.2	9.9	18.5	60
16"	249404	331280003	LT245/70R16	30X9.50R16LT	E	RWL	118Q	(7.0) 6.5-8.0	80	2,910	29.8	9.8	7.8	18.5	46
	249753	331228003	LT265/70R16	31X10.50R16LT	E	RWL	121Q	(8.0) 7.0-9.0	80	3,195	30.9	10.7	8.6	18.5	50
	247533	331058003	LT265/75R16	32X10.50R16LT	E	RWL	123Q	(7.5) 7.0-9.0	80	3,415	31.9	10.1	8.0	18.5	50
	247542	331067003	LT285/75R16	33X11.50R16LT	E	RWL	126Q	(8.0) 7.5-9.5	80	3,750	33.0	11.3	8.6	18.5	57
	247545	331070003	LT305/70R16	33X12.50R16LT	E	RWL	124Q	(9.0) 8.0-10.0	65	3,525	33.1	12.0	9.7	18.5	58
	247555	331080003	LT315/75R16	35X12.50R16LT	E	RWL	127Q	(8.5) 8.0-11.0	65	3,860	34.8	11.9	9.8	18.5	64
17"	247531	331056003	LT265/65R17	31X10.50R17LT	E	RWL	120Q	(8.0) 7.5-9.5	80	3,085	30.8	10.6	8.8	18.5	50
	272485	331295003	LT265/70R17	32X10.50R17LT	E	RWL	121Q	(8.0) 7.0-9.0	80	3,195	31.9	10.8	8.4	18.5	54
	272488	331296003	LT275/70R17	32X11.00R17LT	E	RWL	121Q	(8.0) 7.0-9.0	80	3,195	32.5	10.7	8.8	18.5	55
	272490	331297003	LT285/70R17	33X11.50R17LT	E	RWL	121Q	(8.5) 7.5-9.5	80	3,195	33.1	11.5	9.1	18.5	57
	247539	331064003	LT305/65R17	33X12.50R17LT	E	RWL	121Q	(9.0) 8.5-11.0	65	3,195	32.9	12.3	9.9	18.5	60
	247548	331073003	LT295/70R17	34X12.00R17LT	E	RWL	121Q	(8.5) 7.5-10.0	80	3,195	33.6	11.8	9.5	18.5	59
	272404	331303003	35X12.50R17LT	-	D	RWL	119Q	(10.0) 8.0-11.0	50	3,000	34.5	12.9	10.0	18.5	64
	272406	331304003	LT315/70R17	35X12.50R17LT	D	RWL	121Q	(9.5) 8.0-11.0	50	3,195	34.6	12.8	10.0	18.5	62
	272524	331305002	37X12.50R17LT	-	D	BLK	124Q	(10.0) 8.0-11.0	50	3,525	36.4	13.1	10.0	18.5	70
	272564	331310002	LT265/60R18	31X10.50R18LT	E	BLK	119Q	(8.0) 7.5-9.5	80	3,000	30.5	10.7	8.8	18.5	51
18"	247535	331060003	LT275/65R18	32X11.00R18LT	E	RWL	123Q	(8.0) 7.5-9.5	80	3,415	32.3	11.0	8.8	18.5	53
	247538	331063003	LT265/70R18	33X10.50R18LT	E	RWL	124Q	(8.0) 7.0-9.0	80	3,525	32.9	10.7	8.9	18.5	54
	272492	331299003	LT275/70R18	33X11.00R18LT	E	RWL	125Q	(8.0) 7.0-9.0	80	3,640	33.4	11.0	8.8	18.5	55
	247543	331068003	LT285/65R18	33X11.50R18LT	E	RWL	125Q	(8.5) 8.0-10.0	80	3,640	33.0	11.5	9.2	18.5	58
	247536	331061003	LT305/60R18	33X12.50R18LT	F	RWL	126Q	(9.0) 8.5-11.0	80	3,750	32.5	12.1	10.0	18.5	64
	247550	331075002	LT295/70R18	34X12.00R18LT	E	BLK	129Q	(8.5) 7.5-10.0	80	4,080	34.4	12.0	9.5	18.5	61
	247551	331076003	35X12.50R18LT	-	D	RWL	118Q	(10.0) 8.5-11.0	50	2,910	34.5	12.6	10.0	18.5	65
	247558	331083003	LT305/70R18	35X12.50R18LT	E	RWL	126Q	(9.0) 8.0-10.0	65	3,750	35.1	12.5	9.9	18.5	65
	272526	331306002	LT275/55R20	32X11.00R20LT	E	BLK	120Q	(8.5) 7.5-9.5	80	3,085	32.3	10.8	8.9	18.5	57
	247540	331065002	LT265/60R20	33X10.50R20LT	E	BLK	121Q	(8.0) 7.5-9.5	80	3,195	32.9	10.6	8.7	18.5	56
20"	272528	331307002	LT275/60R20	33X11.00R20LT	E	BLK	123Q	(8.0) 7.5-9.5	80	3,415	32.9	10.9	9.0	18.5	59
	272494	331300002	LT285/55R20	33X11.50R20LT	E	BLK	122Q	(9.0) 8.0-10.0	80	3,305	32.6	11.7	10.3	18.5	59
	249354	331017002	LT295/55R20	33X12.00R20LT	E	BLK	123Q	(9.5) 8.0-10.5	80	3,415	33.1	11.7	10.1	18.5	63
	249355	331010002	33X12.50R20LT	-	E	BLK	114Q	(10.0) 8.5-11.0	65	2,600	32.8	12.6	10.6	18.5	63
	247547	331072002	LT305/55R20	33X12.50R20LT	F	BLK	125Q	(9.5) 8.5-11.0	80	3,640	33.4	12.5	10.1	18.5	64
	247554	331079002	LT275/65R20	34X11.00R20LT	E	BLK	126Q	(8.0) 7.5-9.5	80	3,750	34.7	11.5	9.1	18.5	61
	247549	331074002	LT285/60R20	34X11.50R20LT	E	BLK	125Q	(8.5) 8.0-10.0	80	3,640	33.9	11.4	9.6	18.5	62
	249351	331132002	LT295/60R20	34X12.00R20LT	E	BLK	126Q	(8.5) 8.0-10.5	80	3,750	34.3	11.6	9.7	18.5	63
	249352	331144002	LT295/65R20	35X12.00R20LT	E	BLK	129Q	(8.5) 8.0-10.5	80	4,080	35.4	11.6	9.7	18.5	66
	272496	331301002	35X12.50R20LT	-	F	BLK	125Q	(10.0) 8.5-11.0	80	3,640	34.8	12.5	9.9	18.5	65
247560	331085002	37X13.50R20LT	-	E	BLK	126Q	(10.0) 8.5-11.0	65	3,750	36.5	12.4	9.8	18.5	68	
272530	331308002	37X13.50R20LT	-	E	BLK	127Q	(11.0) 8.5-12.0	65	3,860	36.5	13.3	10.7	18.5	74	

*MAX LOAD DATA IS FOR SINGLE REAR TIRE APPLICATIONS.

ALL SPECIFICATIONS SUBJECT TO CHANGE WITHOUT NOTICE.

• INCREASED-LOAD LT-METRIC OPTIONS FOR HEAVY DUTY APPLICATIONS. • APPROVED FOR THE INCREASING POPULAR 12" AND/OR 14" WIDE WHEELS.

• LOWER-LOAD FLOTATION OPTIONS FOR JEEPS, 1/2-TONS & OFF-ROAD.



BAJA LEGEND MTZ™

MUD TERRAIN



ON-ROAD



EXTREME OFF-ROAD



TIRE FEATURES



POWERPLY 3-PLY SIDE WALL CONSTRUCTION provides increased puncture resistance and more responsive handling



VARIABLE LENGTH AND DEPTH FOUR-PITCH SIDEBITERS® provides off-road traction and grip



T4 SILICA-REINFORCED COMPOUND designed to provide excellent wet handling/braking performance, cut and chip resistance, and lasting treadlife



BOLD & PROVEN MTZ TREAD STYLING for an aggressive appearance and great on/off-road performance



OPTIMIZED TREAD DESIGN AND GEOMETRY help to reduce noise

The **BAJA LEGEND MTZ™** features an innovative design to deliver versatile mud terrain performance, providing excellent traction both on and off-road. Mickey Thompson's legendary Sidebiter® design elements and Powerply™ 3-Ply sidewall construction provide off-road performance, quick steering response, and stability while its T4 silica-reinforced compound fortifies on-road tread wear, wet performance, and treadwear durability.

WHEEL DIAMETER	MATERIAL NUMBER	PRODUCT CODE	TIRE SIZE	EQUIVALENT SIZE	LOAD RANGE	SIDE WALL	SERVICE DESC.	(MEAS. RIM WIDTH) APPD. RIM WIDTH INCHES	MAX. INFL. PSI	MAX. LOAD LBS.*	OVERALL DIAMETER INCHES	SECTION WIDTH INCHES	TREAD WIDTH INCHES	TREAD DEPTH 32NDS	APPROX. WEIGHT LBS.
15"	247441	331119011	31X10.50R15LT	-	C	RWL	109Q	(8.5) 7.0-9.0	50	2,270	30.8	10.7	8.5	20.0	47
	249405	331186011	33X10.50R15LT	-	C	RWL	114Q	(8.5) 7.0-9.0	50	2,600	32.8	11.2	8.6	20.0	53
	247908	331124011	33X12.50R15LT	-	C	RWL	108Q	(10.0) 8.0-11.0	35	2,205	32.7	12.2	9.8	21.0	60
	247931	331137011	35X12.50R15LT	-	C	RWL	113Q	(10.0) 8.0-11.0	35	2,535	34.6	13.1	10.1	21.0	67
16"	247904	331120011	LT265/75R16	32X10.50R16LT	E	RWL	123Q	(7.5) 7.0-9.0	80	3,415	31.9	10.7	8.4	18.5	54
	247909	331125011	LT285/75R16	33X11.50R16LT	E	RWL	126Q	(8.0) 7.5-9.5	80	3,750	33.0	11.2	8.8	19.0	60
	247910	331126011	LT305/70R16	33X12.50R16LT	E	RWL	124Q	(9.0) 8.0-10.0	65	3,525	33.0	12.3	9.9	19.5	61
	247929	331135011	LT315/75R16	35X12.50R16LT	E	RWL	127Q	(8.5) 8.0-11.0	65	3,860	34.5	12.6	9.7	20.5	68
17"	247905	331121011	LT265/70R17	32X10.50R17LT	E	RWL	121Q	(8.0) 7.0-9.0	80	3,195	31.9	10.7	8.5	18.5	54
	247921	331127011	LT285/70R17	33X11.50R17LT	E	RWL	121Q	(8.5) 7.5-9.5	80	3,195	33.0	11.5	9.0	19.0	62
	247907	331123005	LT305/65R17	33X12.50R17LT	E	BLK	121Q	(9.0) 8.5-11.0	65	3,195	32.7	12.3	9.9	21.0	64
	247924	331130011	LT295/70R17	34X12.00R17LT	E	RWL	121Q	(8.5) 7.5-10.0	80	3,195	33.5	12.0	9.7	21.0	65
	• 247933	331141005	35X12.50R17LT	-	D	BLK	119Q	(10.0) 8.0-11.0	50	3,000	34.8	12.5	10.0	21.0	65
	• 272498	331278011	LT315/70R17	35X12.50R17LT	E	RWL	121Q	(9.5) 8.0-11.0	65	3,195	34.6	12.6	10.0	21.0	67
	247939	331147005	37X12.50R17LT	-	D	BLK	124Q	(10.0) 8.0-11.0	50	3,525	36.8	13.0	10.2	22.0	80
	247940	331148005	37X13.50R17LT	-	D	BLK	121Q	(11.0) 8.5-11.5	50	3,195	36.8	13.3	11.0	22.0	81
18"	247959	331152005	40X13.50R17LT	-	C	BLK	121Q	(11.0) 8.5-11.5	35	3,195	39.8	13.6	11.0	22.0	91
	272500	331302011	LT275/70R18	33X11.00R18LT	E	RWL	125P	(8.0) 7.0-9.0	80	3,640	33.3	11.3	9.1	20.0	60
	247906	331122011	LT305/60R18	33X12.50R18LT	F	RWL	126Q	(9.0) 8.5-11.0	80	3,750	32.7	12.0	10.1	21.0	66
	247928	331134011	LT295/70R18	34X12.00R18LT	E	RWL	129P	(8.5) 7.5-10.0	80	4,080	34.5	12.0	9.7	21.0	68
	• 247934	331142005	35X12.50R18LT	-	D	BLK	118Q	(10.0) 8.5-11.0	50	2,910	34.8	12.5	10.1	21.0	70
	• 247935	331143011	LT305/70R18	35X12.50R18LT	E	RWL	126Q	(9.0) 8.0-10.0	65	3,750	35.1	12.4	9.9	21.0	70
	247941	331149005	37X13.50R18LT	-	D	BLK	124Q	(11.0) 8.5-11.5	50	3,525	36.8	13.3	11.0	22.0	82
	20"	247922	331128005	LT295/55R20	33X12.00R20LT	E	BLK	123Q	(9.5) 8.0-10.5	80	3,415	33.1	12.3	10.2	20.0
• 249356		331010005	33X12.50R20LT	-	E	BLK	114Q	(10.0) 8.5-11.0	65	2,600	32.8	12.5	10.3	21.0	65
• 247925		331131005	LT305/55R20	33X12.50R20LT	F	BLK	125Q	(9.5) 8.5-11.0	80	3,640	33.5	12.2	10.4	20.5	68
247927		331133005	LT275/65R20	34X11.00R20LT	E	BLK	126Q	(8.0) 7.5-9.5	80	3,750	34.5	10.9	9.1	19.5	63
247926		331132005	LT295/60R20	34X12.00R20LT	E	BLK	126Q	(8.5) 8.0-10.5	80	3,750	34.3	11.5	9.7	19.5	66
247936		331144005	LT295/65R20	35X12.00R20LT	E	BLK	129Q	(8.5) 8.0-10.5	80	4,080	35.4	11.7	9.7	19.5	69
247932		331140005	35X12.50R20LT	-	F	BLK	125Q	(10.0) 8.5-11.0	80	3,640	34.7	12.4	10.2	21.0	70
• 247937		331145005	36X15.50R20LT	-	E	BLK	126Q	(12.5) 11.0-14.0	65	3,750	36.4	15.4	12.3	21.0	90
247938		331146005	37X12.50R20LT	-	E	BLK	126Q	(10.0) 8.5-11.0	65	3,750	36.7	12.6	10.3	21.0	77
• 247942		331150005	37X13.50R20LT	-	E	BLK	127Q	(11.0) 8.5-12.0	65	3,860	36.9	13.3	10.8	21.0	82
• 247958		331151005	38X15.50R20LT	-	E	BLK	128Q	(12.5) 11.0-14.0	65	3,970	37.8	15.4	12.3	21.0	94
• 247960		331153005	40X14.50R20LT	-	D	BLK	128Q	(11.5) 10.0-13.0	50	3,970	39.8	14.4	11.6	22.0	94

*MAX LOAD DATA IS FOR SINGLE REAR TIRE APPLICATIONS.

ALL SPECIFICATIONS SUBJECT TO CHANGE WITHOUT NOTICE.

• INCREASED-LOAD LT-METRIC OPTIONS FOR HEAVY DUTY APPLICATIONS. • APPROVED FOR THE INCREASING POPULAR 12" AND/OR 14" WIDE WHEELS.

• LOWER-LOAD FLOTATION OPTIONS FOR JEEPS, 1/2-TONS & OFF-ROAD.

EXTREME TIRES

FROM EAST TO WEST AND EVERYWHERE IN BETWEEN, MICKEY THOMPSON'S EXTREME TIRE LINEUP DELIVERS PLENTY OF HARDCORE PERFORMANCE FEATURES TO MEET THE DEMANDS OF ENTHUSIASTS AND COMPETITORS.

BAJA PRO™ XS

PREMIUM EXTREME TERRAIN

EXTREME OFF-ROAD



TIRE FEATURES

- 4-PLY** **FOUR-PLY NYLON SIDEWALL CONSTRUCTION**
offers enhanced stability and durability
- DUAL DECOUPLING GROOVES™**
for flexibility on irregular surfaces
- MUD SCOOPS**
for added cleaning power
- MASSIVE SIDEBITERS® AND ANGLED SHOULDER SCALLOPS**
engineered for ultimate traction and grip
- SYMMETRIC DIRECTIONAL TREAD PATTERN**
designed to provide excellent traction and cleaning power
- D.O.T. CERTIFIED**
for light or occasional highway use

The **BAJA PRO™ XS** is a D.O.T. approved tire designed for on and off-road rigs. With a tough 4-ply nylon sidewall construction, this tire can handle any terrain.

WHEEL DIAMETER	MATERIAL NUMBER	PRODUCT CODE	TIRE SIZE	LOAD RANGE	(MEAS. RIM WIDTH) APPD. RIM WIDTH INCHES	MAX. INFL. PSI	MAX. LOAD LBS.*	OVERALL DIAMETER INCHES	SECTION WIDTH INCHES	TREAD WIDTH INCHES	TREAD DEPTH 32NDS	APPROX. WEIGHT LBS.
16"	250099	331256018	19.5/46-16LT	C	(14.0) 12.0-16.0	40	3,970	46.4	21.1	16.5	27.0	149
	250096	331253018	35X13.50-17LT	C	(11.0) 9.5-12.0	30	2,470	34.6	14.0	11.5	27.0	74
17"	250095	331252018	38X13.50-17LT	D	(11.0) 9.0-11.5	55	3,195	37.9	15.3	11.8	27.0	90
	250094	331251018	40X13.50-17LT	C	(11.0) 9.0-11.5	40	3,195	39.6	15.5	11.7	27.0	99
	250097	331254018	15/43-17LT	C	(11.5) 9.5-12.5	40	3,195	42.3	18.3	13.9	27.0	125
20"	250098	331255018	15/43-20LT	C	(11.5) 9.5-12.5	40	3,935	42.6	18.0	14.2	27.0	131
	250100	331257018	19.5/46-20LT	C	(14.0) 12.0-16.0	40	3,970	46.3	19.9	16.1	27.0	149
24"	250103	331260018	21/58-24LT	C	(16.5) 13.5-17.5	40	3,970	57.8	22.8	17.6	27.0	233

*MAX LOAD DATA IS FOR SINGLE REAR TIRE APPLICATIONS.
ALL SPECIFICATIONS SUBJECT TO CHANGE WITHOUT NOTICE.



BAJA PRO™ X

PREMIUM COMPETITION EXTREME TERRAIN

EXTREME OFF-ROAD COMPETITION



TIRE FEATURES

- STICKY MICKEY** **STICKY COMPOUND**
provides ultimate grip on hard surfaces
- PRO-TECH CONSTRUCTION™**
with nylon bias plies to enhance off-road durability and flexibility to conform to uneven surfaces
- DUAL DECOUPLING GROOVES™**
for flexibility on irregular surfaces
- TREAD BITER™ CLEATS**
for added traction in soft terrain
- MASSIVE SIDEBITERS® AND ANGLED SHOULDER SCALLOPS**
engineered for ultimate traction and grip
- SYMMETRIC DIRECTIONAL TREAD PATTERN**
designed to provide excellent traction and cleaning power

The **BAJA PRO™ X** is the ultimate tire for rock bounding, rock crawling, mud bogging or just showing off! With enhanced off-road durability, the BAJA PRO X helps you tackle terrain with confidence.

WHEEL DIAMETER	MATERIAL NUMBER	PRODUCT CODE	TIRE SIZE	SIDE WALL	(MEAS. RIM WIDTH) APPD. RIM WIDTH INCHES	OVERALL DIAMETER INCHES	SECTION WIDTH INCHES	TREAD WIDTH INCHES	TREAD DEPTH 32NDS	APPROX. WEIGHT LBS.
17"	250117	331274019	43X14.50-17LT	BLK	(8.5) 8.5-11.0	42.0	16.9	15.0	27.0	114

THIS TIRE IS NOT D.O.T. CERTIFIED.
ALL SPECIFICATIONS SUBJECT TO CHANGE WITHOUT NOTICE.

BAJA PRO™ X (SXS)

PREMIUM COMPETITION EXTREME TERRAIN



EXTREME OFF-ROAD



COMPETITION



TIRE FEATURES



X1 STICKY COMPOUND
provides ultimate grip on hard surfaces



PRO-TECH CONSTRUCTION™
with nylon bias plies to enhance off-road durability and flexibility to conform to uneven surfaces



DUAL DECOUPLING GROOVES™
for flexibility on irregular surfaces



TREAD BITER™ CLEATS
for added traction in soft terrain



MASSIVE SIDEBITERS® AND ANGLED SHOULDER SCALLOPS
engineered for ultimate traction and grip



SYMMETRIC DIRECTIONAL TREAD PATTERN
designed to provide excellent traction and cleaning power

BAJA BOSS® XS

COMPETITION PROVEN EXTREME TERRAIN



EXTREME OFF-ROAD



COMPETITION



TIRE FEATURES



POWERPLY™ PRO
innovative 4-ply sidewall construction for increased puncture resistance



EXTRA LARGE FOUR-PITCH SIDEBITERS®
for enhanced off-road traction



FUNCTIONAL ASYMMETRIC PATTERN
and a silica-reinforced compound provides off-road traction



D.O.T. CERTIFIED
for highway use

The **BAJA PRO™ X (SXS)** is the ultimate side-by-side tire for rock bouncing, rock crawling, mud bogging, or just showing off! With its enhanced off-road durability, it ensures you can tackle any terrain with confidence.

WHEEL DIAMETER	MATERIAL NUMBER	PRODUCT CODE	TIRE SIZE	(MEAS. RIM WIDTH) APPD. RIM WIDTH INCHES	OVERALL DIAMETER INCHES	SECTION WIDTH INCHES	TREAD WIDTH INCHES	TREAD DEPTH 32NDS	APPROX. WEIGHT LBS.
14"	250116	331273019	30X10.00-14	(8.0) 7.0-8.5	30.3	10.3	9.5	27.0	46
	250115	331272019	32X10.00-14	(8.0) 7.0-8.5	31.9	10.7	9.7	27.0	49
	250114	331271019	35X10.00-14	(8.0) 7.0-8.5	34.6	12.0	9.9	27.0	63
15"	250111	331268019	30X10.00-15	(8.0) 7.0-8.5	30.2	10.0	9.4	27.0	49
	250110	331267019	32X10.00-15	(8.0) 7.0-8.5	32.0	10.8	9.8	27.0	52
	250109	331266019	35X10.00-15	(8.0) 7.0-8.5	34.3	11.7	9.9	27.0	64

THIS TIRE IS NOT D.O.T. CERTIFIED.

ALL SPECIFICATIONS SUBJECT TO CHANGE WITHOUT NOTICE.

The **BAJA BOSS® XS** blends the functional technology that revolutionized the mud terrain market in 2019 from the Baja Boss® M/T with the competition-proven durability of the Baja Boss® X. Extreme Sidebiters® with a silica-reinforced compound provide excellent traction and durability in off-road conditions. Paired with our innovative 4-ply PowerPly™ PRO sidewall technology, the Baja Boss® XS provides purpose-built traction for the varied and sometimes unpredictable terrain of competition-style rock crawling, endurance desert racing and short course style racing.

WHEEL DIAMETER	MATERIAL NUMBER	PRODUCT CODE	TIRE SIZE	LOAD RANGE	SIDE WALL	SERVICE DESC.	(MEAS. RIM WIDTH) APPD. RIM WIDTH INCHES	MAX. INFL. PSI	MAX. LOAD LBS.*	OVERALL DIAMETER INCHES	SECTION WIDTH INCHES	TREAD WIDTH INCHES	TREAD DEPTH 32NDS	APPROX. WEIGHT LBS.
17"	261886	331277013	35X12.50R17LT	C	BLK	111Q	(10.0) 8.0-11.0	35	2,405	34.8	12.5	10.0	22.0	76
	261885	331276013	37X12.50R17LT	C	BLK	116Q	(10.0) 8.0-11.0	35	2,755	36.8	13.0	10.2	22.0	86
	261884	331275013	40X13.50R17LT	B	BLK	115Q	(11.0) 8.5-11.5	25	2,680	39.8	13.6	11.0	22.0	100

*MAX LOAD DATA IS FOR SINGLE REAR TIRE APPLICATIONS.

ALL SPECIFICATIONS SUBJECT TO CHANGE WITHOUT NOTICE.



BAJA BOSS® X

COMPETITION PROVEN EXTREME TERRAIN

EXTREME OFF-ROAD COMPETITION



TIRE FEATURES

- STICKY MICKEY** STICKY COMPOUND provides ultimate grip on hard surfaces
- POWERPLY™ PRO 4-PLY** innovative 4-ply sidewall construction for increased puncture resistance
- AAAA SIDE+BITERS®** EXTRA LARGE FOUR-PITCH SIDEBITERS® for enhanced off-road traction
- STONE EJECTOR RIBS** prevent gravel from being wedged into tread grooves

The **BAJA BOSS® X** is a no-compromise, competition-centered tire featuring our sticky competition compound. Powerply™ PRO construction offers better durability, stability, and steering response, while the extra large, four-pitch Sidebiters® maximize off-road traction. The addition of our Stone Ejector Ribs prevents debris from becoming wedged into the tread grooves, maintaining consistent traction and longevity.

WHEEL DIAMETER	MATERIAL NUMBER	PRODUCT CODE	TIRE SIZE	LOAD RANGE	SIDE WALL	SERVICE DESC.	(MEAS. RIM WIDTH) APPD. RIM WIDTH INCHES	MAX. INFL. PSI	MAX. LOAD LBS.*	OVERALL DIAMETER INCHES	SECTION WIDTH INCHES	TREAD WIDTH INCHES	TREAD DEPTH 32NDS	APPROX. WEIGHT LBS.
17"	250091	331249021	37X12.50R17LT	C	BLK	116F	(10.0) 8.0-11.0	35	2,755	36.8	13.0	10.2	22.0	80
	250090	331238021	40X13.50R17LT	B	BLK	115F	(11.0) 8.5-11.5	25	2,680	39.8	13.6	11.0	22.0	103
	261757	331312021	42X13.50R17LT	B	BLK	119F	(11.0) 9.0-11.5	25	3,000	41.9	14.2	11.3	22.0	T80
20"	261758	331313021	42X13.50R20LT	C	BLK	124F	(11.0) 9.0-11.5	35	3,525	41.9	14.0	11.3	22.0	T80

*MAX LOAD DATA IS FOR SINGLE REAR TIRE APPLICATIONS.

THIS TIRE IS NOT D.O.T. CERTIFIED.

ALL SPECIFICATIONS SUBJECT TO CHANGE WITHOUT NOTICE.

• 37X12.50R17LT USES POWERPLY™ XD CONSTRUCTION.



LT TIRE COMPOUND CODES

LT COMPOUND CODES

Code	Description
S1	Next gen silica reinforced compound engineered to provide excellent wet handling/braking, lasting treadlife and cold/wet weather traction for lighter duty applications
T1	Next gen silica reinforced compound engineered to provide excellent wet handling/braking, lasting treadlife and cold/wet weather traction for heavy-duty applications
T4	Silica reinforced compound engineered to provide excellent wet handling/braking performance, cut & chip resistance and lasting treadlife
X3	Competition compound developed for long-distance/high speed/rock crawling competition. Equally at-home on a low powered/low-speed rock crawlers. NOT FOR HIGHWAY USE.
T5	Extremely durable compound optimized for aggressive short-distance or low speed rock crawling with limited, low speed highway use
X1	Competition compound developed for aggressive short-distance rock bouncing or low speed rock crawling. NOT FOR HIGHWAY USE.

	S1	T1	T4	X3	T5	X1
BAJA PRO™ X						X
BAJA PRO™ XS					X	
BAJA BOSS® X				X		
BAJA BOSS® XS			X			
BAJA BOSS® M/T			X			
BAJA BOSS® A/T (LT)		X				
BAJA BOSS® A/T (SUV)	X					
BAJA LEGEND MTZ™			X			
BAJA LEGEND EXP™			X			

LT TIRE CONSTRUCTION

LT TIRE CONSTRUCTION

Construction Type	Description
PREMIUM RADIAL	Radial construction, engineered to provide a premium on-road experience
NEXT GEN, HIGH TENSILE	Radial construction which replaces the body plies used in "Premium Radial" with high tensile strength plies
POWERPLY™	Unique radial construction utilizing two radial plies and one bias-ply.
POWERPLY™ XD	Competition proven construction, adding 50% heavier denier cord to the third ply
POWERPLY™ PRO	Composed of two radial plies sandwiched between two heavy-duty bias plies with added sidewall rubber gauge.
PREMIUM BIAS	Bias-ply construction, designed with four nylon body plies and two belts
PRO-TECH	Bias-ply construction, the sidewall and bead areas have been reinforced

	PREMIUM RADIAL	NEXT GEN, HIGH TENSILE	POWERPLY™	POWERPLY™ XD	POWERPLY™ PRO	PREMIUM BIAS	PRO-TECH
BAJA PRO™ X							X
BAJA PRO™ XS						X	
BAJA BOSS® X					X**		
BAJA BOSS® XS					X		
BAJA BOSS® M/T				X			
BAJA BOSS® A/T (LT)				X			
BAJA BOSS® A/T (SUV)	X						
BAJA LEGEND MTZ™			X				
BAJA LEGEND EXP™		X*					

*LOAD RANGES D, E, & F

** 37" SIZE USES POWERPLY XD

DRAG TIRES

MICKEY THOMPSON DRAG TIRES ARE BUILT ON A LEGACY OF COMPETITION. WE'RE COMMITTED TO THE EVOLVING DEMANDS OF THE SPORT THROUGH ADVANCED COMPOUND DEVELOPMENT AND INNOVATIVE TIRE CONSTRUCTION. FROM STREET LEGAL TO TRACK ONLY VEHICLES, WE'VE GOT THE RIGHT DRAG TIRE FOR YOU.



WARNING: STREET RACING IS ILLEGAL, DANGEROUS, AND MAY PUT LIVES AT RISK. MICKEY THOMPSON TIRES & WHEELS DOES NOT CONDONE NOR PROMOTE RACING ANY MOTOR VEHICLES ON PUBLIC ROADWAYS.



ET DRAG®

COMPETITION DRAG SLICK

 **COMPETITION**



TIRE FEATURES



MULTIPLE COMPOUNDS AND SIZES
for a variety of drag race applications
achieving maximum traction



COMPOUNDED
designed to achieve max traction



REQUIRES LITTLE OR NO BURNOUT
for easier drag racing performance



ENGINEERED
for consistent build quality and tested
performance results

Real world research and development give **ET® DRAG** tires the edge over competitive brands. Engineered for maximum traction and consistent ETs with superior construction and compounding for nearly every drag race application.

WHEEL DIAMETER	MATERIAL NUMBER	PRODUCT CODE	PART NUMBER	TIRE SIZE	MEASURED RIM WIDTH INCHES	OVERALL DIAMETER INCHES	SECTION WIDTH INCHES	TREAD WIDTH INCHES	CIRC. INCHES	COMPOUND	SUGGESTED TUBE	APPROX. WEIGHT LBS.
13"	250841	365037011	30161	24.5/9.0-13	7.0	24.5	10.9	8.8	77	X8	248923	16
	250861	365047011	3015	24.5/8.0-15	8.0	24.5	9.6	7.7	77	L8	248923	17
	250847	365043011	3052	26.0/8.5-15	8.0	25.9	9.9	8.1	81	L8	248923	19
	250297	365001011	3053	26.0/10.0-15	10.0	26.0	11.6	9.6	82	L8	248923	22
	• 255257	365096011	3053S	26.0/10.0-15S	10.0	26.5	11.5	9.8	83	M5	248923	24
	250846	365042011	3054	28.0/9.0-15	8.0	27.3	10.8	8.6	86	L8	248923	22
	255283	365098011	3054ST	28.0/9.0-15	8.0	27.3	10.8	8.6	86	M5	248923	22
	250845	365041011	3055	28.0/10.5-15	10.0	28.1	12.5	10.0	88	M5	248923	23
	250838	365034011	30554	28.0/10.5-15	10.0	28.1	12.4	10.0	88	L4	248923	24
	250812	365090011	30558	28.0/10.5-15	10.0	28.1	12.5	10.0	88	L8	248923	24
	• 255255	365094011	3055S	28.0/10.5-15S	10.0	28.1	12.5	10.0	88	M5	248923	24
	• 255258	365097011	30558	28.0/10.5-15S	10.0	28.1	12.4	10.0	88	L8	248923	24
	255254	365093011	3055W	28.0/10.5-15W	10.0	28.1	13.1	10.9	88	M5	250997	26
	• 255259	365099011	30551	28.0/10.5-15W	10.0	28.1	13.1	10.9	88	M5	250997	27
	15"	255284	365103011	30565T	29.5/9.0-15ST	8.0	29.3	11.4	8.9	92	M5	248923
250836		365032011	3062	29.5/10.5-15	10.0	29.9	13.1	10.2	94	M5	250997	25
• 255253		365092011	3062S	29.5/10.5-15S	10.0	29.9	13.2	10.2	94	M5	250997	27
• 255251		365091011	3062W	29.5/10.5-15W	10.0	29.6	13.6	11.2	93	M5	250997	30
250834		365030011	3065	29.5/13.5-15	12.0	30.2	16.0	13.1	95	M5	250997	29
• 255282		365102011	3068W	31.0/10.5-15W	10.0	31.3	14.5	10.8	98	M5	250997	33
250833		365029011	3072	31.0/13.0-15	12.0	31.0	15.7	13.0	97	M5	250998	32
250300		365089011	3073W	31.25/12.2-15W	12.0	31.5	15.8	13.2	99	L8	250998	29
250832		365028011	3074	32.0/14.0-15	14.0	31.8	17.2	14.2	100	L8	250998	33
• 255260		365100011	3074S	32.0/14.0-15S	14.0	32.2	17.1	14.2	101	L8	250998	35
• 250811		365018011	3074ST	32.0/14.0-15ST	14.0	32.2	17.1	14.2	101	M5	250998	36
250831		365027011	30751	14.5/32.0-15	14.0	33.0	17.4	14.5	104	L8	250998	38
• 250527		365105011	30771	32.0/16.0-15S	15.0	32.0	18.5	15.8	101	X8	250998	42
• 255281		365101011	3069W	33.0/10.5-15W	10.0	32.9	14.5	11.2	103	M5	250998	33
• 250526		365104011	3080	33.0/15.0-15S	14.0	33.6	18.1	14.8	106	X8	250998	37
• 250962	365109011	3084S	33.0/16.5-15S	15.0	33.5	20.0	16.7	105	L8	250998	41	
16"	250961	365108011	3169W	33.0/10.5-16W	15.0	33.0	16.8	11.3	104	M5	250998	34
	• 250817	365023011	3183	33.5/16.5-16	16.0	33.7	20.8	16.5	106	X8	250998	41
	• 250529	365107011	3190W	34.0/13.5-16W	16.0	34.5	18.3	14.0	109	X5	-	39
	• 250528	365106011	3191W	34.0/13.5-16W	16.0	34.5	18.3	14.0	109	X8	-	39
	• 250816	365022011	3195	35.0/15.0-16	16.0	35.2	18.6	14.5	111	X5	-	41
	• 250839	365035011	3197	35.0/15.0-16	16.0	35.2	18.6	14.5	111	L6	-	41

ACCEPTABLE PRACTICE FOR RIM WIDTH IS TREAD WIDTH PLUS OR MINUS 1 INCH. SEE PAGE 33 FOR COMPOUND CONSTRUCTION DATA.
IMPORTANT: ALL BIAS DRAG DRIVE TIRES MUST BE MATCHED TO BE WITHIN 1/2 INCH ROLL OUT.
NOTE: BESIDES BEING REQUIRED FOR AIR RETENTION, M/T TUBES WILL ENHANCE REACTION TIME AND REDUCE SIDEWALL SHOCK AND DEFLECTION WHEN LAUNCHING.
WARNING: DO NOT USE ON DYNO.

ALL SPECIFICATIONS SUBJECT TO CHANGE WITHOUT NOTICE.

• HIGH GROWTH SIDEWALL. • STIFF SIDEWALL.

ET DRAG[®] PRO DRAG RADIAL

COMPETITION DRAG RADIAL

 COMPETITION



TIRE FEATURES



RADIAL CONSTRUCTION
for lower rolling resistance



ZERO GROWTH
for predictable gear ratios



COMPOUNDED
designed to achieve max traction



AUTO TRANS OPTIMIZATION
for excellent drag racing performance

PRO BRACKET RADIAL

COMPETITION "BRACKET" RADIAL

 COMPETITION



TIRE FEATURES



LOW ROLLING RESISTANCE
allows the tire to be quicker than bias-ply counterparts



CONSISTENT ROLLOUTS
are always the same, no need to "match" tires



CONSISTENT PERFORMANCE
for excellent bracket racing reliability



TUBELESS CONSTRUCTION
provides a leak-free seal without the expense and hassle of tubes

ET DRAG[®] PRO DRAG RADIAL are the fastest drag tires on the strip! The radial construction allows for less rolling resistance for better ETs. Our radial slicks will give you the edge over the competition!

WHEEL DIAMETER	MATERIAL NUMBER	PRODUCT CODE	PART NUMBER	TIRE SIZE	MEASURED RIM WIDTH INCHES	OVERALL DIAMETER INCHES	SECTION WIDTH INCHES	TREAD WIDTH INCHES	CIRC. INCHES	COMPOUND	SUGGESTED TUBE	APPROX. WEIGHT LBS.
15"	250856	315050007	3052R	26.0/8.5R15	8.0	26.4	9.9	8.5	83	R1	TUBELESS	24
	250855	315049007	3058R	29.5/9.0R15	10.0	29.5	11.2	8.5	93	R1	TUBELESS	24
	250828	315037007	3062R	29.5/10.5R15	10.0	30.0	12.7	10.2	94	R1	TUBELESS	31
	250821	315021007	3060R	30.0/9.0R15	10.0	29.7	12.5	9.0	93	R1	TUBELESS	23
	250822	315022007	3063R	30.0/9.0R15	10.0	29.9	11.8	9.2	94	R1	TUBELESS	23
	250851	315040007	3076R	32.0/14.0R15	14.0	32.5	17.4	14.0	102	R1	TUBELESS	32

ACCEPTABLE PRACTICE FOR RIM WIDTH IS TREAD WIDTH PLUS OR MINUS 1 INCH. SEE PAGE 33 FOR COMPOUND CONSTRUCTION DATA.
WARNING: NEVER USE RIM SCREWS ON RADIAL DRAG TIRES. DO NOT USE ON DYNO.

ALL SPECIFICATIONS SUBJECT TO CHANGE WITHOUT NOTICE.

The PRO BRACKET RADIAL from Mickey Thompson is a fast, consistent, and affordable radial for the weekend Sportsman racer.

WHEEL DIAMETER	MATERIAL NUMBER	PRODUCT CODE	PART NUMBER	TIRE SIZE	MEASURED RIM WIDTH INCHES	OVERALL DIAMETER INCHES	SECTION WIDTH INCHES	TREAD WIDTH INCHES	CIRC. INCHES	COMPOUND	SUGGESTED TUBE	APPROX. WEIGHT LBS.
15"	250658	315030006	3354R	28.0/9.0R15	8.0	28.0	10.7	9.0	88	X5	TUBELESS	26
	250798	315058006	3355R	28.0/10.5R15	10.0	28.0	12.2	10.2	88	X5	TUBELESS	29
	250797	315037006	3362R	29.5/10.5R15	10.0	30.0	12.5	10.2	94	X5	TUBELESS	31
	250795	315019006	3373R	31.0/13.5R15	14.0	31.9	16.3	13.5	100	X5	TUBELESS	41
	250796	315035006	3374R	32.0/14.0R15	14.0	32.6	16.5	14.1	102	X5	TUBELESS	42
	17"	250656	315075006	3317R	26.0/10.0R17	10.0	26.0	10.9	10.0	82	X5	TUBELESS
250657		315029006	3327R	27.0/10.5R17	10.0	27.0	11.0	10.2	85	X5	TUBELESS	28
250803		315028006	3337R	28.0/10.5R17	10.0	28.0	11.7	10.3	88	X5	TUBELESS	30
18"	250802	315073006	3347R	29.5/10.5R17	10.0	29.5	12.7	10.6	93	X5	TUBELESS	35
	250801	315072006	3348R	29.0/10.5R18	10.0	28.9	11.9	10.5	91	X5	TUBELESS	32
20"	250800	315074006	3340R	29.0/11.5R20	10.0	28.7	12.0	10.4	90	X5	TUBELESS	34

ACCEPTABLE PRACTICE FOR RIM WIDTH IS TREAD WIDTH PLUS OR MINUS 1 INCH. SEE PAGE 33 FOR COMPOUND CONSTRUCTION DATA.
WARNING: NEVER USE RIM SCREWS ON RADIAL DRAG TIRES. DO NOT USE ON DYNO.

ALL SPECIFICATIONS SUBJECT TO CHANGE WITHOUT NOTICE.

ET STREET® R BIAS

BIAS PLY STREET LEGAL DRAG TIRE

 STREET  COMPETITION



TIRE FEATURES



LATEST ET DRAG® TECHNOLOGY provides the ultimate traction for clutch applications



MINIMAL TREAD VOID to promote excellent dry traction



D.O.T. CERTIFIED for street use

ET STREET® FRONT

COMPLIMENTS THE ET STREET® DRAG RADIAL TIRE LINES

 STREET  COMPETITION



TIRE FEATURES



RADIAL CONSTRUCTION for lower rolling resistance



GREAT PAIRING with our popular ET Street® R, ET Street® S/S® and ET Street® Radial Pro lines



LIGHTWEIGHT CONSTRUCTION unlocks the potential for quicker ETs



D.O.T. CERTIFIED for street use

The **ET STREET® R BIAS** from Mickey Thompson is a D.O.T. approved street legal drag tire with proven race compounds and incredible traction.

WHEEL DIAMETER	MATERIAL NUMBER	PRODUCT CODE	PART NUMBER	TIRE SIZE	(MEAS. RIM WIDTH) APPR. RIM WIDTH INCHES	OVERALL DIAMETER INCHES	SECTION WIDTH INCHES	TREAD WIDTH INCHES	CIRC. INCHES	COMPOUND	SUGGESTED TUBE	APPROX. WEIGHT LBS.
15"	250970	365120004	3554	28X11.50-15LT	(8.0) 8.0-10.0	28.2	11.1	8.8	89	M5	248923	22
	250960	365115004	3561	28X12.50-15LT	(10.0) 9.0-11.0	28.0	12.6	10.1	88	M5	250997	24
	250969	365119004	3556	31X16.50-15LT	(12.0) 11.0-14.0	31.9	16.0	13.4	100	M5	250998	34
	250968	365117004	3557	32X17.50-15LT	(14.0) 12.0-15.0	32.2	17.9	14.4	101	M5	250998	35
17"	250974	365121004	3579	27X10.50-17LT	(8.0) 7.0-9.0	26.8	10.7	9.0	84	M5	TUBELESS	27
	250975	364116004	3574	28X11.50-17LT	(9.0) 8.5-10.5	28.5	11.1	9.5	90	M5	TUBELESS	27

PROPER SIZE AND TYPE OF TUBE MUST BE USED WITH ALL D.O.T. TUBE TYPE TIRES. SEE PAGE 33 FOR COMPOUND CONSTRUCTION DATA.
CAUTION: IT IS NOT RECOMMENDED THAT RADIAL AND NON-RADIAL TIRES BE MIXED ON THE SAME VEHICLE.
IMPORTANT: ALL BIAS ET STREET R TIRES MUST BE MATCHED TO BE WITHIN 1/2 INCH ROLL OUT. DO NOT USE ON DYNO.

ALL SPECIFICATIONS SUBJECT TO CHANGE WITHOUT NOTICE.

ET STREET® FRONT tires are available in standard sizes to fit early and late-model muscle cars like Camaros, Mustangs, Corvettes, as well as older hot rods and street rods.

WHEEL DIAMETER	MATERIAL NUMBER	PRODUCT CODE	PART NUMBER	TIRE SIZE	LOAD RANGE	(MEAS. RIM WIDTH) APPR. RIM WIDTH INCHES	MAX. INFL. PSI	MAX. LOAD LBS.	OVERALL DIAMETER INCHES	SECTION WIDTH INCHES	TREAD WIDTH INCHES	CIRC. INCHES	APPROX. WEIGHT LBS.
15"	250738	315055010	3850	26X6.00R15LT	B	(4.0) 3.5-5.0	35	990	25.8	6.1	4.8	81	16
	250736	315053010	3851	27X6.00R15LT	B	(4.0) 3.5-5.0	35	990	26.8	6.2	4.5	84	16
17"	250737	315054010	3870	26X6.00R17LT	C	(4.5) 4.0-5.0	50	1,025	25.9	6.0	4.4	81	15
	250735	315052010	3871	27X6.00R17LT	C	(4.5) 4.0-5.0	50	1,100	26.9	6.1	4.4	84	16
18"	250734	315046010	3880	28X6.00R18LT	C	(4.5) 4.0-5.0	50	1,140	27.9	6.1	4.7	88	18

ALL SPECIFICATIONS SUBJECT TO CHANGE WITHOUT NOTICE.

ET STREET® R

D.O.T. CERTIFIED FOR STREET USE

 STREET  COMPETITION



TIRE FEATURES



MINIMAL TREAD VOID
to promote excellent tread contact



TUBELESS CONSTRUCTION
provides leak-free seal without the expense and hassle of tubes



D.O.T. CERTIFIED
for street use



UTQG 000 CC
for competition use

ET STREET® RADIAL PRO

WORLD'S FASTEST D.O.T. RADIAL DRAG TIRE

 COMPETITION



TIRE FEATURES



REDUCED TREAD PATTERN
for maximum traction



NEXT GENERATION CONSTRUCTION
designed to take more power for better launches



RACE USE ONLY
NOT for street use

A drag tire that can be driven on the street, the **ET STREET® R** from Mickey Thompson is a D.O.T. approved street legal drag tire with proven race compounds and incredible traction.

WHEEL DIAMETER	MATERIAL NUMBER	PRODUCT CODE	PART NUMBER	TIRE SIZE	EQUIVALENT SIZE	(MEAS. RIM WIDTH) APPR. RIM WIDTH INCHES	OVERALL DIAMETER INCHES	SECTION WIDTH INCHES	TREAD WIDTH INCHES	CIRC. INCHES	COMPOUND	APPROX. WEIGHT LBS.
15"	255597	315091004	3550	P225/50R15	24X9.50R15	(7.0) 6.0-8.0	24.1	9.1	7.8	76	R2	21
	255600	315094004	3552	P275/50R15	26X11.50R15	(8.5) 7.5-9.5	26.3	11.2	10.1	83	R2	28
	255599	315093004	3553	P255/60R15	27X10.50R15	(7.5) 7.0-9.0	27.5	10.3	8.8	87	R2	26
	254479	315085004	3559	P275/60R15	28X11.50R15	(8.0) 7.5-9.5	28.2	11.1	9.5	89	R2	30
	255598	315092004	3555	P325/50R15	28X13.50R15	(10.0) 9.0-11.5	28.3	13.0	11.3	89	R2	33
	254478	315084004	3558	P295/65R15	30X12.50R15	(8.5) 8.0-10.5	30.2	12.1	10.5	95	R2	34
	254477	315083004	3563	P315/60R15	30X13.50R15	(9.5) 8.5-11.0	30.1	13.3	11.7	95	R2	37
17"	255591	315087004	3573	P275/40R17	26X11.50R17	(9.5) 9.0-11.0	26.1	10.9	10.2	82	R2	27
	255601	315095004	3571	P315/35R17	26X12.50R17	(11.0) 10.5-12.5	25.9	12.4	11.3	81	R2	30
	255604	315098004	3577	P285/45R17	27X11.50R17	(9.5) 9.0-10.5	27.2	11.1	9.7	85	R2	28
	255595	315090004	3572	P305/45R17	28X12.50R17	(10.0) 9.5-11.5	28.1	11.7	10.5	88	R2	31
	254476	315082004	3576	P315/50R17	30X13.50R17	(10.0) 8.5-11.0	29.4	12.7	11.2	92	R2	35
18"	254475	315081004	3578	P315/55R17	31X12.50R17	(10.0) 8.5-11.0	30.6	12.8	11.0	96	R2	38
	255593	315088004	3581	P325/35R18	27X13.50R18	(11.0) 10.0-12.0	27.0	13.1	12.1	85	R2	33
	255594	315089004	3580	P305/45R18	29X12.50R18	(10.0) 9.5-11.5	29.0	11.8	10.7	91	R2	32

SEE PAGE 33 FOR COMPOUND CONSTRUCTION DATA.
WARNING: NEVER USE RIM SCREWS ON RADIAL DRAG TIRES. DO NOT USE ON DYNO.
CAUTION: IT IS NOT RECOMMENDED THAT RADIAL AND NON-RADIAL TIRES BE MIXED ON THE SAME VEHICLE.

ALL SPECIFICATIONS SUBJECT TO CHANGE WITHOUT NOTICE.



The **ET STREET® RADIAL PRO** is a purpose built race tire for classes requiring a P275/60R15 or P315/60R15 D.O.T. approved radial.

WHEEL DIAMETER	MATERIAL NUMBER	PRODUCT CODE	PART NUMBER	TIRE SIZE	EQUIVALENT SIZE	MEASURED RIM WIDTH INCHES	OVERALL DIAMETER INCHES	SECTION WIDTH INCHES	TREAD WIDTH INCHES	CIRC. INCHES	COMPOUND	APPROX. WEIGHT LBS.
15"	250350	315002005	3754X	P275/60R15	28X11.50R15	8.0	28.2	11.4	9.8	89	R2	32
	250739	315018015	3763X	P315/60R15	30X13.50R15	9.5	30.3	13.2	11.5	95	R2	39

SEE PAGE 33 FOR COMPOUND CONSTRUCTION DATA.
WARNING: RACE ONLY. NOT FOR STREET USE. NEVER USE RIM SCREWS ON RADIAL DRAG TIRES. DO NOT USE ON DYNO.
CAUTION: IT IS NOT RECOMMENDED THAT RADIAL AND NON-RADIAL TIRES BE MIXED ON THE SAME VEHICLE.

ALL SPECIFICATIONS SUBJECT TO CHANGE WITHOUT NOTICE.

ET STREET® S/S®

STREET TIRE FOR THE STRIP



PREMIUM ON-ROAD



COMPETITION



TIRE FEATURES



OUR PROVEN R2 COMPOUND
for improved traction at the strip
with little to no burnout required



REDISTRIBUTED TREAD VOID
for improved tread contact and
excellent dry traction



TUBELESS CONSTRUCTION
provides leak-free seal without
the expense and hassle of tubes



D.O.T. CERTIFIED
for street use

ET FRONT™

ULTRA LIGHT FRONT RUNNER



COMPETITION



TIRE FEATURES



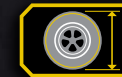
ULTRA-LIGHTWEIGHT DESIGN
reduces rolling resistance



HIGH SPEED USE*
designed for high speed performance



TUBELESS CONSTRUCTION
provides leak-free seal without the
expense and hassle of tubes



AVAILABLE IN POPULAR SIZES
for a variety of fitments

A street tire that can be driven on the track, the **ET STREET® S/S®** from Mickey Thompson is a high performance street-to-strip tire with radial construction and our R2 compound.

WHEEL DIAMETER	MATERIAL NUMBER	PRODUCT CODE	PART NUMBER	TIRE SIZE	EQUIVALENT SIZE	LOAD RANGE	(MEAS. RIM WIDTH) APPR. RIM WIDTH INCHES	OVERALL DIAMETER INCHES	SECTION WIDTH INCHES	TREAD WIDTH INCHES	CIRC. INCHES	COMPOUND	APPROX. WEIGHT LBS
15"	255613	315108003	3450	P235/60R15	26X9.50R15	STD	(7.0) 6.0-8.0	26.2	9.4	8.3	82	R2	29
	255612	315107003	3451	P275/50R15	26X11.50R15	STD	(8.5) 7.5-9.5	26.4	11.1	10.2	83	R2	31
	255611	315106003	3452	P255/60R15	27X10.50R15	STD	(7.5) 7.5-9.5	27.3	10.1	8.8	86	R2	31
	255510	315105003	3453	P275/60R15	28X11.50R15	STD	(8.0) 7.0-9.0	28.2	11.1	9.3	89	R2	32
	255509	315104003	3454	P295/55R15	28X12.50R15	STD	(9.5) 8.5-10.5	28.0	11.9	10.6	88	R2	34
16"	255508	315113003	3455	P295/65R15	30X12.50R15	STD	(8.5) 8.5-10.5	30.3	12.0	10.6	95	R2	41
17"	255507	315103003	3460	P255/50R16	26X10.50R16	STD	(8.0) 7.0-9.0	26.4	10.4	9.4	83	R2	29
	255506	315102003	3470	P275/40R17	26X11.50R17	STD	(9.5) 9.5-11.5	26.0	10.8	10.3	82	R2	31
	255607	315101003	3471	P315/35R17	26X12.50R17	STD	(11.0) 10.5-12.5	25.9	12.3	11.4	81	R2	32
18"	250792	315016003	3472	P305/45R17	28X12.50R17	STD	(10.0) 9.0-11.0	27.9	11.9	10.6	88	R2	36
	255615	315110003	3480	P305/35R18	26X12.50R18	LL	(11.0) 10.0-12.0	26.6	12.2	11.2	84	R2	33
	250597	315013003	3481	P285/40R18	27X11.50R18	LL	(10.0) 9.5-11.0	26.9	11.3	10.5	85	R2	29
	250791	315015003	3484	P275/45R18	28X11.50R18	STD	(9.0) 8.0-10.0	27.8	11.3	10.0	87	R2	32
	250794	315071003	3482	P305/40R18	25X12.50R18	STD	(11.0) 10.0-12.0	26.0	12.2	11.1	88	R2	33
	255614	315109003	3483	P345/35R18	28X13.50R18	LL	(12.0) 11.0-13.0	27.8	13.5	12.4	87	R2	38
	250594	315006003	3492	P285/35R19	27X11.50R19	STD	(10.0) 9.0-11.0	27.0	11.6	11.2	85	R2	32
	255606	315100003	3491	P305/35R19	27X12.50R19	STD	(11.0) 10.0-12.0	27.2	12.9	11.5	86	R2	38
19"	250596	315012003	3490	P325/30R19	27X13.50R19	LL	(11.5) 11.0-12.0	27.0	12.9	12.0	85	R2	36
	250595	315010003	3401	P275/40R20	29X11.50R20	XL	(9.5) 9.5-11.5	29.0	10.8	9.9	91	R2	33
	255605	315099003	3402	P305/35R20	29X12.50R20	STD	(11.0) 10.0-12.0	28.7	12.0	11.0	90	R2	34
20"	250591	315001003	3405	P305/45R20	31X12.50R20	STD	(10.0) 9.0-11.0	31.1	11.9	10.3	98	R2	42

SEE PAGE 33 FOR COMPOUND CONSTRUCTION DATA. WARNING: NEVER USE RIM SCREWS ON RADIAL DRAG TIRES. DO NOT USE ON DYNO. CAUTION: IT IS NOT RECOMMENDED THAT RADIAL AND NON-RADIAL TIRES BE MIXED ON THE SAME VEHICLE. ALL SPECIFICATIONS SUBJECT TO CHANGE WITHOUT NOTICE. WARNING: STREET RACING IS ILLEGAL, DANGEROUS, AND MAY PUT LIVES AT RISK. MICKEY THOMPSON TIRES & WHEELS DOES NOT CONDONE NOR PROMOTE RACING ANY MOTOR VEHICLES ON PUBLIC ROADWAYS.



The **ET FRONT™** is a complete line of front tires with applications for cars, dragsters, and land speed racers. The tire complements our ET Drag® drive tires for a complete race tire package.

WHEEL DIAMETER	MATERIAL NUMBER	PRODUCT CODE	PART NUMBER	TIRE SIZE	(MEAS. RIM WIDTH) APPR. RIM WIDTH INCHES	OVERALL DIAMETER INCHES	SECTION WIDTH INCHES	TREAD WIDTH INCHES	CIRC. INCHES	APPROX. WEIGHT LBS.
15"	250931	365075020	3005	22.5/4.5-15	(4.0) 3.5-5.0	22.5	5.1	4.1	71	11
	250926	365070020	30061	24.0/4.5-15	(4.0) 3.5-4.0	24.2	5.8	4.3	76	11
	250934	365078020	3001	25.0/4.5-15	(4.0) 3.5-4.0	25.0	6.5	4.5	79	11
	250925	365069020	30071	26.0/4.0-15	(3.5) 3.5-4.0	26.1	6.2	4.5	82	12
	250924	365068020	30091	27.5/4.0-15	(3.5) 3.5-4.0	27.3	6.8	4.6	86	12
	250933*	365077020	3002	28.0/4.5-15	(4.0) 3.5-4.5	28.0	7.2	5.1	88	13
	250909*	365063020	30081	29.0/4.5-15	(4.0) 3.5-5.0	28.7	7.3	4.5	90	13
17"	250910	365064020	30045	22.0/2.5-17	(2.5) 2.5-2.5	22.0	2.7	1.5	69	4
	250923	365067020	30073	26.0/4.0-17	(3.5) 3.5-4.0	26.5	5.4	4.5	83	11
	250922	365066020	30093	27.5/4.0-17	(3.5) 3.5-4.0	27.8	5.8	4.5	87	12

*MATERIAL #250933 AND #250909 NOT ACCEPTABLE FOR LAND SPEED RECORD USE.

ALL SPECIFICATIONS SUBJECT TO CHANGE WITHOUT NOTICE.

ET JR.®

ULTIMATE JR. DRAG TIRE



COMPETITION

TIRE FEATURES



COMPOUNDED
to achieve maximum traction



ENGINEERED
for consistent performance



REQUIRES LITTLE OR NO BURNOUT
for easier drag racing performance

Number one in Jr. Drag Racing Tires, **ET JR.®** slicks have the edge over competing brands! Engineered for maximum traction and consistent ETs.

WHEEL DIAMETER	MATERIAL NUMBER	PRODUCT CODE	PART NUMBER	TIRE SIZE	MEASURED RIM WIDTH INCHES	OVERALL DIAMETER INCHES	SECTION WIDTH INCHES	TREAD WIDTH INCHES	CIRC. INCHES	COMPOUND	APPROX. WEIGHT LBS
8"	250935	365085019	3625	18.0/8.0-8	8.0	18.0	10.5	7.3	57	L2	6
	250939	365084019	3627	18.0/8.5-8	8.0	18.1	10.8	8.1	57	L2	6
10"	250940	365062019	3645	19.0/8.0-10	8.0	19.5	9.5	7.2	61	L2	8

ACCEPTABLE PRACTICE FOR RIM WIDTH IS TREAD WIDTH PLUS OR MINUS 1 INCH. IMPORTANT: ALL BIAS DRAG DRIVE TIRES MUST BE MATCHED TO BE WITHIN 1/2 INCH ROLL OUT. SEE PAGE 33 FOR COMPOUND CONSTRUCTION DATA. WARNING: RACE ONLY. NOT FOR STREET USE. ALL SPECIFICATIONS SUBJECT TO CHANGE WITHOUT NOTICE.

ET DRAG® MOTORCYCLE

MOTORCYCLE DRAG RACING TIRE



COMPETITION

TIRE FEATURES



COMPOUNDED
to achieve maximum traction



ENGINEERED
for consistent performance



REQUIRES LITTLE OR NO BURNOUT
for easier drag racing performance



RACE USE ONLY
NOT for street use.

The **ET DRAG® MOTORCYCLE** tire is consistently setting records and winning races. Mickey Thompson is number one in Motorcycle Drag Racing and racers ask for our tires by name.

WHEEL DIAMETER	MATERIAL NUMBER	PRODUCT CODE	PART NUMBER	TIRE SIZE	MEASURED RIM WIDTH INCHES	OVERALL DIAMETER INCHES	SECTION WIDTH INCHES	TREAD WIDTH INCHES	CIRC. INCHES	COMPOUND	APPROX. WEIGHT LBS
15"	250967	365110001	3053M	26.0-10.0-15M	9.0	26.0	11.0	9.8	82	L7	19
	250907	365015017	3073M	31.0/14.0-15M	13.0	31.0	16.8	13.6	97	L7	34
16"	250906	365014017	3158M	27.0/10.0-16M	9.0	27.0	11.6	10.0	85	L7	20
17"	250901	365008017	3221	26.0/7.0-17	6.5	25.7	7.4	6.5	81	M5	13
18"	250903	365010017	3210	2.50/2.75-18	3.0	23.5	3.1	1.7	74	-	6
	250900	365007017	3222	25.0/7.0-18	6.5	25.9	7.2	6.6	81	L7	12

SEE PAGE 33 FOR COMPOUND CONSTRUCTION DATA. WARNING: RACE ONLY. NOT FOR STREET USE. WARNING: 17-INCH AND 18-INCH MOTORCYCLE TIRES SHOULD NEVER BE MOUNTED ON AUTOMOTIVE RIMS. SERIOUS INJURY OR DEATH CAN OCCUR IF MOTORCYCLE TIRES ARE MOUNTED ON AUTOMOTIVE RIMS OR VICE VERSA. ALL SPECIFICATIONS SUBJECT TO CHANGE WITHOUT NOTICE.

M/T® NATURAL RUBBER TUBES

Made specifically for high performance racing applications. 100% natural rubber tubes with an aircraft style removable valve stem that clamps to the wheel. Extremely light weight and durable, these tubes are a must for racing applications.

TUBE FEATURES

- 100% NATURAL RUBBER
- AIRCRAFT-TYPE REMOVABLE VALVE STEM
- VALVE CLAMPS TO WHEEL
- EXTREMELY LIGHTWEIGHT AND DURABLE

MATERIAL NUMBER	PRODUCT CODE	PART NUMBER	SIZE	APPROX. WEIGHT LBS	DESCRIPTION
248923	191050010	9553	9.50-15/16	4.1	24.5" to 28" Diameter with 8.0" to 10.5" Tread
250997	191050011	9555	11.50-15	5.6	28" to 31" Diameter with 10.5" to 11.5" Tread
250998	191050012	9558	15.00-15/16	8.1	31" to 33.5" Diameter with 12.0" to 17" Tread

DRAG TIRE COMPOUND & CONSTRUCTION

Mickey Thompson tires are compounded by size and application. The following points are general application suggestions. Mickey Thompson is not responsible for misapplications. The catalog number suffix indicates a construction, size or compound enhancement for particular applications.

MEDIUM

SOFT

X5 M5 L6 R2 R1 X8 L8 L7 L4 L2

To identify the compound of your current ET Drag® tires, look at the serial number on the sidewall of the tire.

EXAMPLE: CY1J M5 FJ07224

COMPOUND CODE

DRAG TIRE COMPOUNDS	
X5	Cooler running version of M5
M5	Good compound for general use
L6	Good for high horsepower - Boosted applications
R2	Special Compound for ET Street® S/S®, ET Street® R, and ET Street® Radial Pro
R1	Special Compound for ET Drag® Pro Drag Radial
X8	Cooler running version of L8
L8	Good compound for general use
L7	For Motorcycles
L4	For Dragsters, lightweight vehicles, and vehicles without rear suspension
L2	For Jr. Dragsters

DRAG TIRE CONSTRUCTION	
ST	Suggested for manual transmissions (medium compound)
W	Extra tread width (please note actual tread and section width on spec sheet)
S	Stiff sidewall construction, aids in quicker reaction time due to less tire distortion Also good in high horsepower applications and for heavy cars (Over 3,000 lbs)
R	Radial Construction

STREET TIRES

IN A NATION THAT IS KNOWN FOR SERIOUS CAR CULTURE, WE CELEBRATE HOT-RODS, MUSCLE CARS AND EVERYTHING IN-BETWEEN. IF YOU'VE PUT BLOOD, SWEAT AND TEARS INTO YOUR BUILD, THEN WE'VE GOT YOUR STAGGERED FITMENTS.



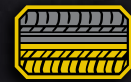
STREET COMP™

ULTRA-HIGH PERFORMANCE STREET TIRE

 PREMIUM ON-ROAD



TIRE FEATURES



ASYMMETRIC TREAD
designed for high speed handling and cornering ability



SUPERIOR WET AND DRY PERFORMANCE
engineered for optimal traction and responsiveness



AGGRESSIVE STEERING RESPONSE
for excellent handling



UTQG 300 AA A

SPORTSMAN S/T™

CLASSIC MUSCLE CAR STREET TIRE

 PREMIUM ON-ROAD



TIRE FEATURES



POPULAR SIZES
for muscle car applications



FLAT TREAD PROFILE
for both handling and long tread life



RADIAL CONSTRUCTION
for smooth ride and long mileage



UTQG 440 A B
440 A C for material number 249395

The Mickey Thompson **STREET COMP™** radial is an ultra-high performance summer tire designed for the street. Engineered for high speed handling and cornering ability, and compounded for traction and responsiveness in both wet and dry conditions, the Street Comp is the perfect tire for late model American muscle cars and pro touring applications.

WHEEL DIAMETER	MATERIAL NUMBER	PRODUCT CODE	TIRE SIZE	EQUIVALENT SIZE	LOAD RANGE	SERVICE DESC.	(MEAS. RIM WIDTH) APPR. RIM WIDTH INCHES	MAX. INFL. PSI	OVERALL DIAMETER INCHES	SECTION WIDTH INCHES	TREAD WIDTH INCHES	TREAD DEPTH 32NDS	APPROX. WEIGHT LBS.
17"	248240	321009002	245/45R17	26X9.50R17	STD	95Y	(8.0) 7.5-9.0	51	25.6	9.5	8.6	10.0	27
	248816	321010002	275/40R17	26X11.50R17	STD	98W	(9.5) 9.0-11.0	51	25.6	10.9	9.9	10.0	29
	248817	321011002	315/35R17	26X12.50R17	STD	102W	(11.0) 10.5-12.5	51	25.6	12.5	11.2	10.0	32
18"	248818	321012002	245/40R18	26X9.50R18	XL	97Y	(8.5) 8.0-9.5	50	25.7	9.8	8.8	10.0	27
	248819	321013002	295/35R18	26X12.00R18	STD	99Y	(10.5) 10.0-11.5	51	26.1	11.9	10.1	10.0	32
	248824	321018002	255/45R18	27X10.50R18	XL	103W	(8.5) 8.0-10.0	50	27.1	10.1	9.1	10.0	30
	248820	321014002	275/40R18	27X11.50R18	STD	99Y	(9.5) 9.0-11.0	51	26.6	10.9	9.9	10.0	31
19"	248823	321017002	255/40R19	27X10.50R19	XL	100Y	(9.0) 8.5-10.0	50	27.0	10.2	9.3	10.0	29
	248821	321015002	285/35R19	27X11.50R19	STD	99Y	(10.0) 9.5-11.0	51	26.9	11.3	10.1	10.0	31
20"	248822	321016002	255/35R20	27X10.50R20	XL	97W	(9.0) 8.5-10.0	50	27.0	10.2	9.1	10.0	29
	248825	321019002	275/35R20	27X11.50R20	XL	102W	(9.5) 9.0-11.0	50	27.6	10.7	9.7	10.0	31
	248828	321022002	245/45R20	28X9.50R20	XL	103Y	(8.0) 7.5-9.0	50	28.7	9.5	8.6	10.0	31
	248827	321021002	275/40R20	28X11.50R20	XL	106Y	(9.5) 9.0-11.0	50	28.6	10.9	9.9	10.0	34
	248826	321020002	305/35R20	28X12.00R20	XL	107Y	(11.0) 10.0-12.0	50	28.4	12.3	10.6	10.0	36

WARNING: STREET RACING IS ILLEGAL, DANGEROUS, AND MAY PUT LIVES AT RISK. MICKEY THOMPSON TIRES & WHEELS DOES NOT CONDONE NOR PROMOTE RACING ANY MOTOR VEHICLES ON PUBLIC ROADWAYS. ALL SPECIFICATIONS SUBJECT TO CHANGE WITHOUT NOTICE.

The Mickey Thompson **SPORTSMAN S/T™** is designed for muscle car owners who demand performance, quality and style. Optional raised white sidewall letters and a low-profile look make this tire a perfect fit for classic, vintage models.

WHEEL DIAMETER	MATERIAL NUMBER	PRODUCT CODE	TIRE SIZE	SERVICE DESC.	(MEAS. RIM WIDTH) APPR. RIM WIDTH INCHES	MAX. INFL. PSI	MAX. LOAD LBS.	OVERALL DIAMETER INCHES	SECTION WIDTH INCHES	TREAD WIDTH INCHES	TREAD DEPTH 32NDS	APPROX. WEIGHT LBS.
15"	249391	321001001	P235/60R15	98T	(7.0) 6.5-8.5	44	1,642	26.1	9.2	7.6	10.5	26
	249392	321002001	P245/60R15	100T	(7.0) 7.0-8.5	44	1,753	26.6	9.5	8.0	10.5	27
	249123	321003001	P215/70R15	97T	(6.5) 5.5-7.0	44	1,620	26.7	8.7	7.0	10.5	26
	249395	321004001	P295/50R15	105S	(9.5) 8.0-10.0	44	2,061	26.8	12.2	10.1	10.5	32
	249393	321006001	P255/60R15	102T	(7.5) 7.0-9.0	44	1,885	27.0	10.2	8.2	10.5	27
	249390	321007001	P225/70R15	100T	(6.5) 6.0-7.5	44	1,753	27.4	9.1	7.2	10.5	26
	249394	321008001	P275/60R15	107T	(8.0) 7.5-9.5	44	2,149	28.1	10.7	8.9	10.5	31

ALL SPECIFICATIONS SUBJECT TO CHANGE WITHOUT NOTICE.

SPORTSMAN FRONT™

BIAS PLY D.O.T. APPROVED TIRE



PREMIUM ON-ROAD



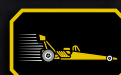
COMPETITION



TIRE FEATURES



D.O.T. CERTIFIED
for street use



DRAG RACING FRONT DESIGN
suitable for front tire drag racing applications



BIAS-PLY CONSTRUCTION



TUBELESS CONSTRUCTION
provides leak-free seal without the expense and hassle of tubes

SPORTSMAN S/R™

ULTIMATE STREET ROD TIRE



PREMIUM ON-ROAD



COMPETITION



TIRE FEATURES



RADIAL CONSTRUCTION
for smooth ride and long mileage



UNIQUE "FLAMED" TREAD PATTERN
provides improved wet traction



MATCHING FRONT AND REAR TREAD PATTERN
for staggered fitments



CUSTOM SIZES
for street rods and muscle cars

The Mickey Thompson **SPORTSMAN FRONT™** is a street legal high performance tire for hot rods, t-buckets and muscle cars. This street legal tire compliments the rear.

WHEEL DIAMETER	MATERIAL NUMBER	PRODUCT CODE	TIRE SIZE	(MEAS. RIM WIDTH) APPR. RIM WIDTH INCHES	MAX. INFL. PSI	MAX. LOAD LBS.	OVERALL DIAMETER INCHES	SECTION WIDTH INCHES	TREAD WIDTH INCHES	TREAD DEPTH 32NDS	APPROX. WEIGHT LBS.
15"	255670	321027005	26X7.50-15LT	(4.0) 3.5-6.5	30	1,000	26.0	6.3	4.8	8.0	16
	255667	321024005	26X7.50-15LT	(4.0) 3.5-6.5	60	1,450	26.0	6.3	4.8	8.0	19
	255669	321026005	28X7.50-15LT	(4.0) 3.5-6.5	30	1,100	28.0	6.9	5.5	8.0	20

CAUTION: IT IS NOT RECOMMENDED THAT RADIAL AND NON-RADIAL TIRES BE MIXED ON THE SAME VEHICLE.

ALL SPECIFICATIONS SUBJECT TO CHANGE WITHOUT NOTICE.

• LOAD RANGE D, FRONT TIRE FOR CARS AND TRUCKS OVER 3,000 LBS.

The Mickey Thompson **SPORTSMAN S/R™** is the undisputed Classic Hot Rod tire built with our "flamed" tread pattern. The extra wide rears match with the skinny fronts for our best combination available.

WHEEL DIAMETER	MATERIAL NUMBER	PRODUCT CODE	TIRE SIZE	SERVICE DESC.	(MEAS. RIM WIDTH) APPR. RIM WIDTH INCHES	MAX. INFL. PSI	MAX. LOAD LBS.	OVERALL DIAMETER INCHES	SECTION WIDTH INCHES	TREAD WIDTH INCHES	TREAD DEPTH 32NDS	APPROX. WEIGHT LBS.	
15"	255648	321055004	24X5.00R15LT	76H	(4.0) 3.5-4.5	50	900	24.0	5.8	4.5	8.0	15	
	255632	321039004	26X6.00R15LT	80H	(4.0) 3.5-5.0	35	990	26.0	6.5	5.7	8.0	20	
	255649	321056004	26X8.00R15LT	80H	(6.0) 5.0-7.0	35	1,000	26.1	8.5	7.0	8.0	21	
	255653	321061004	27X6.00R15LT	-	(5.0) 3.0-5.0	35	990	27.0	6.4	5.4	8.0	19	
	255654	321064004	28X6.00R15LT	-	(4.5) 3.5-5.0	35	1,040	28.0	6.9	4.8	8.0	21	
	255634	321041004	28X10.00R15LT	90H	(8.0) 7.0-8.5	35	1,335	28.0	10.3	8.7	8.0	27	
	255650	321057004	28X12.00R15LT	93H	(10.0) 8.5-10.0	35	1,435	28.0	12.1	10.4	8.0	31	
	255657	321067004	29X15.00R15LT	98H	(12.0) 10.0-13.0	25	1,325	29.0	15.0	13.0	8.0	42	
	255656	321066004	29X18.00R15LT	94H	(14.0) 14.0-16.0	25	1,500	29.0	17.3	15.8	8.0	49	
	255633	321040004	30X12.00R15LT	99H	(10.0) 8.5-10.0	35	1,740	30.0	12.6	10.2	8.0	36	
	255672	321059004	31X16.00R15LT	105H	(12.0) 12.0-14.0	35	2,080	31.0	16.0	13.9	8.0	47	
	255655	321065004	31X18.00R15LT	99H	(14.0) 14.0-16.0	25	1,720	31.0	17.9	15.7	8.0	50	
	255671	321037004	33X22.00R15LT	107H	(15.0) 15.0-18.0	25	2,200	32.0	20.0	17.8	8.0	59	
	17"	255643	321050004	26X6.00R17LT	-	(4.5) 4.0-5.0	50	1,025	26.1	6.3	5.7	8.0	18
		255641	321048004	27X6.00R17LT	-	(4.5) 4.0-5.0	50	1,100	27.0	6.2	5.4	8.0	21
		255642	321049004	28X6.00R17LT	-	(4.5) 4.0-5.0	50	1,175	28.0	6.6	5.7	8.0	25
18"	255644	321051004	26X6.00R18LT	79H	(5.0) 4.5-5.5	50	980	26.0	6.3	5.7	8.0	18	
	255638	321045004	28X6.00R18LT	-	(4.5) 4.0-5.0	95	1,650	28.0	6.6	5.7	8.0	25	
20"	255651	321058004	29X15.00R20LT	93H	(14.0) 13.0-14.0	50	1,460	29.0	14.7	13.0	8.0	41	
	255637	321044004	29X18.00R20LT	80H	(16.0) 15.0-16.0	35	1,000	29.0	17.2	15.5	8.0	46	
	255636	321043004	31X18.00R20LT	94H	(16.0) 15.0-16.0	25	1,500	31.1	17.3	15.7	8.0	50	
	255635	321042004	33X22.00R20LT	97H	(17.0) 16.0-18.0	25	1,650	32.0	18.9	17.8	8.0	58	

SPORTSMAN S/R® TIRES CAN BE USED WITH THE PRO DRAG RADIAL, PRO BRACKET RADIAL, ET STREET® RADIAL PRO, ET STREET® R (RADIAL SIZES), AND ET STREET® S/S® TIRES. CAUTION: IT IS NOT RECOMMENDED THAT RADIAL AND NON-RADIAL TIRES BE MIXED ON THE SAME VEHICLE. ALL SPECIFICATIONS SUBJECT TO CHANGE WITHOUT NOTICE. • LOAD RANGE F

WHEELS

INSPIRED BY THE LEGENDARY MICKEY THOMPSON, MT WHEELS OFFER THE PERFECT FUSION OF CLASSIC APPEAL AND CONTEMPORARY FUNCTIONALITY. MT WHEELS FEATURE CUTTING-EDGE AND VERSATILE FITMENTS FOR BOTH CLASSIC AND MODERN TRUCKS & SUVs. TO HELP YOU COMMAND THE ROAD AND MASTER THE TRAILS, BE SURE YOU HAVE MICKEY THOMPSON TIRES & WHEELS ON YOUR VEHICLE.



ALL-NEW

MT CLASSIC PRO

MT PRO SERIES WHEELS

FINISHES: SATIN BRONZE • SATIN BLACK • POLISHED



SHOWN: SATIN BRONZE FINISH

WHEEL FEATURES



SIMULATED BEADLOCK STYLE
with genuine 5/8" Zinc bolts for a classic and commanding look



VALVE STEM NICHE CUT OUT
for easy access



MODERN LOW PROFILE CAP DESIGN



VAST FITMENTS
for most modern trucks, Jeeps, and SUVs



AVAILABLE IN POPULAR 17", 18", 20" WHEEL DIAMETERS

WHEEL FINISHES



SATIN BRONZE



SATIN BLACK



POLISHED

The **MT CLASSIC PRO** blends timeless style with modern road-ready performance. Featuring an 8-hole design inspired by the Mickey Thompson Classic III and a street-style simulated beadlock. Available in Polished, Satin Black, and Satin Bronze.

WHEEL DIAMETER	MATERIAL NUMBER	PRODUCT CODE	SIZE	BOLT CIRCLE	BACK SPACE INCHES	OFFSET MM	HUB BORE MM	MAX LOAD LBS	REPLACEMENT CAP	APPROX. WT. LBS.	
MT CLASSIC PRO - POLISHED FINISH											
17"	274477	226100305	17X9	5X5	4.530	-12	71.60	2,500	274579	28	
	274240	226100306	17X9	5X5.5	4.530	-12	108.10	2,500	274580	28	
	274551	226100307	17X9	6X120	4.800	-5	67.00	2,500	274601	26	
	274553	226100309	17X9	6X135	4.530	-12	87.10	2,500	274602	28	
	274554	226100310	17X9	6X5.5	5.000	0	108.10	2,500	274603	26	
	274555	226100311	17X9	6X5.5	4.530	-12	108.10	2,500	274603	28	
	274556	226100312	17X9	8X6.5	5.000	0	125.20	3,500	274604	29	
	274557	226100313	17X9	8X170	5.000	0	125.20	3,500	274604	29	
	274558	226100314	18X9	5X5	4.530	-12	71.60	2,500	274579	28	
	274559	226100315	18X9	5X5.5	5.000	0	108.10	2,500	274580	28	
18"	274560	226100316	18X9	5X150	5.000	0	110.10	2,500	274580	28	
	274561	226100317	18X9	6X120	4.800	-5	67.00	2,500	274601	28	
	274562	226100318	18X9	6X135	5.000	0	87.10	2,500	274602	28	
	274563	226100319	18X9	6X5.5	5.000	0	108.10	2,500	274603	28	
	274564	226100320	18X9	8X6.5	5.000	0	125.20	3,750	274604	30	
	274565	226100321	18X9	8X170	5.000	0	125.20	3,750	274604	30	
	274566	226100322	18X9	8X180	5.000	0	125.20	3,750	274605	30	
	274567	226100323	20X9	5X5	5.000	0	71.60	2,500	274579	35	
	274568	226100324	20X9	5X5.5	5.000	0	108.10	2,500	274580	35	
	274569	226100325	20X9	5X150	5.000	0	110.10	2,500	274580	35	
20"	274590	226100326	20X9	6X135	5.000	0	87.10	2,500	274602	35	
	274591	226100327	20X9	6X5.5	5.000	0	108.10	2,500	274603	35	
	274430	226100328	20X9	8X6.5	5.000	0	125.20	3,750	274604	36	
	274592	226100329	20X9	8X170	5.000	0	125.20	3,750	274604	36	
	274593	226100330	20X9	8X180	5.000	0	125.20	3,750	274605	36	
	MT CLASSIC PRO - SATIN BLACK FINISH										
	17"	274239	226100331	17X9	5X5	4.530	-12	71.60	2,500	274693	28
		274463	226100332	17X9	5X5.5	4.530	-12	108.10	2,500	274694	28
		274464	226100333	17X9	6X120	4.800	-5	67.00	2,500	274695	26
		274466	226100335	17X9	6X135	4.530	-12	87.10	2,500	274696	28
274467		226100336	17X9	6X5.5	5.000	0	108.10	2,500	274697	26	
274468		226100337	17X9	6X5.5	4.530	-12	108.10	2,500	274697	28	
274469		226100338	17X9	8X6.5	5.000	0	125.20	3,500	274698	29	
274470		226100339	17X9	8X170	5.000	0	125.20	3,500	274698	29	
274521		226100340	18X9	5X5	4.530	-12	71.60	2,500	274693	28	
274668		226100341	18X9	5X5.5	5.000	0	108.10	2,500	274694	28	
18"	274606	226100342	18X9	5X150	5.000	0	110.10	2,500	274694	28	
	274607	226100343	18X9	6X120	4.800	-5	67.00	2,500	274695	28	
	274608	226100344	18X9	6X135	5.000	0	87.10	2,500	274696	28	
	274609	226100345	18X9	6X5.5	5.000	0	108.10	2,500	274697	28	
	274610	226100346	18X9	8X6.5	5.000	0	125.20	3,750	274698	30	
	274701	226100347	18X9	8X170	5.000	0	125.20	3,750	274698	30	
	274702	226100348	18X9	8X180	5.000	0	125.20	3,750	274699	30	
	274704	226100350	20X9	5X5	5.000	0	71.60	2,500	274693	35	
	274705	226100351	20X9	5X5.5	5.000	0	108.10	2,500	274694	35	
	274703	226100349	20X9	5X150	5.000	0	110.10	2,500	274694	35	
20"	274706	226100352	20X9	6X135	5.000	0	87.10	2,500	274696	35	
	274707	226100353	20X9	6X5.5	5.000	0	108.10	2,500	274697	35	
	274708	226100354	20X9	8X6.5	5.000	0	125.20	3,750	274698	36	
	274709	226100355	20X9	8X170	5.000	0	125.20	3,750	274698	36	
	274710	226100356	20X9	8X180	5.000	0	125.20	3,750	274699	36	
	MT CLASSIC PRO - SATIN BRONZE FINISH										
	17"	274478	226100357	17X9	5X5	4.530	-12	71.60	2,500	274595	28
		274479	226100358	17X9	5X5.5	4.530	-12	108.10	2,500	274596	28
		274480	226100359	17X9	6X120	4.800	-5	67.00	2,500	274597	26
		274492	226100361	17X9	6X135	4.530	-12	87.10	2,500	274598	28
274493		226100362	17X9	6X5.5	5.000	0	108.10	2,500	274599	26	
274494		226100363	17X9	6X5.5	4.530	-12	108.10	2,500	274599	28	
274495		226100364	17X9	8X6.5	5.000	0	125.20	3,500	274600	29	
274496		226100365	17X9	8X170	5.000	0	125.20	3,500	274600	29	
274497		226100366	18X9	5X5	4.530	-12	71.60	2,500	274595	28	
274498		226100367	18X9	5X5.5	5.000	0	108.10	2,500	274596	28	
18"	274499	226100368	18X9	5X150	5.000	0	110.10	2,500	274596	28	
	274500	226100369	18X9	6X120	4.800	-5	67.00	2,500	274597	28	
	274501	226100370	18X9	6X135	5.000	0	87.10	2,500	274598	28	
	274502	226100371	18X9	6X5.5	5.000	0	108.10	2,500	274599	28	
	274503	226100372	18X9	8X6.5	5.000	0	125.20	3,750	274600	30	
	274504	226100373	18X9	8X170	5.000	0	125.20	3,750	274600	30	
	274505	226100374	18X9	8X180	5.000	0	125.20	3,750	274611	30	
	274506	226100375	20X9	5X5	5.000	0	71.60	2,500	274595	35	
	274507	226100376	20X9	5X5.5	5.000	0	108.10	2,500	274596	35	
	274508	226100377	20X9	5X150	5.000	0	110.10	2,500	274596	35	
20"	274509	226100378	20X9	6X135	5.000	0	87.10	2,500	274598	35	
	274510	226100379	20X9	6X5.5	5.000	0	108.10	2,500	274599	35	
	274511	226100380	20X9	8X6.5	5.000	0	125.20	3,750	274600	36	
	274512	226100381	20X9	8X170	5.000	0	125.20	3,750	274600	36	
	274513	226100382	20X9	8X180	5.000	0	125.20	3,750	274611	36	

ALL SPECIFICATIONS SUBJECT TO CHANGE WITHOUT NOTICE.



ALL-NEW

MT CANYON PRO

MT PRO SERIES WHEELS

FINISHES: SATIN BRONZE • SATIN BLACK • POLISHED



SHOWN: SATIN BRONZE FINISH

WHEEL FEATURES



SIMULATED BEADLOCK STYLE
with genuine 5/8" Zinc bolts delivers a bold, aggressive look



MODERN LOW PROFILE CAP DESIGN



VAST FITMENTS
for most modern trucks, Jeeps, and SUVs



AVAILABLE IN POPULAR 17", 18", 20" WHEEL DIAMETERS

WHEEL FINISHES



SATIN BRONZE



SATIN BLACK



POLISHED

The **MT CANYON PRO** is a truck and SUV wheel blending modern race-inspired looks with street-ready style. It features a classic 5-hole slot design and a simulated bead lock. Available in three finishes: Polished, Satin Black, and Satin Bronze.

WHEEL DIAMETER	MATERIAL NUMBER	PRODUCT CODE	SIZE	BOLT CIRCLE	BACK SPACE INCHES	OFFSET MM	HUB BORE MM	MAX LOAD LBS	REPLACEMENT CAP	APPROX. WT. LBS.
MT CANYON PRO - POLISHED FINISH										
17"	274642	226100427	17X9	5X5	4.530	-12	71.60	2,500	274579	27
	274643	226100428	17X9	5X5.5	4.530	-12	108.10	2,500	274580	27
	274644	226100429	17X9	6X120	4.800	-5	67.00	2,500	274601	27
	274646	226100431	17X9	6X135	4.530	-12	87.10	2,500	274602	27
	274647	226100432	17X9	6X5.5	5.000	0	108.10	2,500	274603	27
	274648	226100433	17X9	6X5.5	4.530	-12	108.10	2,500	274603	27
	274649	226100434	17X9	8X6.5	5.000	0	125.20	3,500	274604	28
	274650	226100435	17X9	8X170	5.000	0	125.20	3,500	274604	28
18"	274651	226100436	18X9	5X5	4.530	-12	71.60	2,500	274579	30
	274652	226100437	18X9	5X5.5	5.000	0	108.10	2,500	274580	29
	274653	226100438	18X9	5X150	5.000	0	110.10	2,500	274580	29
	274654	226100439	18X9	6X120	4.800	-5	67.00	2,500	274601	29
	274655	226100440	18X9	6X135	5.000	0	87.10	2,500	274602	29
	274656	226100441	18X9	6X5.5	5.000	0	108.10	2,500	274603	29
	274657	226100442	18X9	8X6.5	5.000	0	125.20	3,750	274604	30
	274658	226100443	18X9	8X170	5.000	0	125.20	3,750	274604	30
20"	274659	226100444	18X9	8X180	5.000	0	125.20	3,750	274605	30
	274660	226100445	20X9	5X5	5.000	0	71.60	2,500	274579	35
	274661	226100447	20X9	5X5.5	5.000	0	108.10	2,500	274580	35
	274662	226100448	20X9	5X150	5.000	0	110.10	2,500	274580	35
	274663	226100449	20X9	6X135	5.000	0	87.10	2,500	274602	35
	274664	226100450	20X9	6X5.5	5.000	0	108.10	2,500	274603	35
	274665	226100451	20X9	8X6.5	5.000	0	125.20	3,750	274604	37
	274666	226100452	20X9	8X170	5.000	0	125.20	3,750	274604	37
274667	226100453	20X9	8X180	5.000	0	125.20	3,750	274605	37	
MT CANYON PRO - SATIN BLACK FINISH										
17"	274522	226100568	17X9	5X5	4.530	-12	71.60	2,500	274693	27
	274523	226100569	17X9	5X5.5	4.530	-12	108.10	2,500	274694	27
	274524	226100570	17X9	6X120	4.800	-5	67.00	2,500	274695	27
	274526	226100572	17X9	6X135	4.530	-12	87.10	2,500	274696	27
	274527	226100573	17X9	6X5.5	5.000	0	108.10	2,500	274697	27
	274528	226100574	17X9	6X5.5	4.530	-12	108.10	2,500	274697	27
	274529	226100575	17X9	8X6.5	5.000	0	125.20	3,500	274698	28
	274530	226100576	17X9	8X170	5.000	0	125.20	3,500	274698	28
18"	274561	226100577	18X9	5X5	4.530	-12	71.60	2,500	274693	30
	274562	226100578	18X9	5X5.5	5.000	0	108.10	2,500	274694	29
	274563	226100579	18X9	5X150	5.000	0	110.10	2,500	274694	29
	274564	226100580	18X9	6X120	4.800	-5	67.00	2,500	274695	29
	274565	226100581	18X9	6X135	5.000	0	87.10	2,500	274696	29
	274566	226100582	18X9	6X5.5	5.000	0	108.10	2,500	274697	29
	274567	226100583	18X9	8X6.5	5.000	0	125.20	3,750	274698	30
	274568	226100584	18X9	8X170	5.000	0	125.20	3,750	274698	30
20"	274569	226100585	18X9	8X180	5.000	0	125.20	3,750	274699	30
	274570	226100586	20X9	5X5	5.000	0	71.60	2,500	274693	35
	274571	226100587	20X9	5X5.5	5.000	0	108.10	2,500	274694	35
	274572	226100588	20X9	5X150	5.000	0	110.10	2,500	274694	35
	274573	226100589	20X9	6X135	5.000	0	87.10	2,500	274696	35
	274574	226100590	20X9	6X5.5	5.000	0	108.10	2,500	274697	35
	274575	226100591	20X9	8X6.5	5.000	0	125.20	3,750	274698	37
	274576	226100592	20X9	8X170	5.000	0	125.20	3,750	274698	37
274577	226100593	20X9	8X180	5.000	0	125.20	3,750	274699	37	
MT CANYON PRO - SATIN BRONZE FINISH										
17"	274613	226100594	17X9	5X5	4.530	-12	71.60	2,500	274595	27
	274614	226100595	17X9	5X5.5	4.530	-12	108.10	2,500	274596	27
	274615	226100596	17X9	6X120	4.800	-5	67.00	2,500	274597	27
	274617	226100598	17X9	6X135	4.530	-12	87.10	2,500	274598	27
	274618	226100599	17X9	6X5.5	5.000	0	108.10	2,500	274599	27
	274619	226100600	17X9	6X5.5	4.530	-12	108.10	2,500	274599	27
	274620	226100601	17X9	8X6.5	5.000	0	125.20	3,500	274600	28
	274671	226100602	17X9	8X170	5.000	0	125.20	3,500	274600	28
18"	274672	226100603	18X9	5X5	4.530	-12	71.60	2,500	274595	30
	274673	226100604	18X9	5X5.5	5.000	0	108.10	2,500	274596	29
	274674	226100605	18X9	5X150	5.000	0	110.10	2,500	274596	29
	274675	226100606	18X9	6X120	4.800	-5	67.00	2,500	274597	29
	274676	226100607	18X9	6X135	5.000	0	87.10	2,500	274598	29
	274677	226100608	18X9	6X5.5	5.000	0	108.10	2,500	274599	29
	274678	226100609	18X9	8X6.5	5.000	0	125.20	3,750	274600	30
	274679	226100610	18X9	8X170	5.000	0	125.20	3,750	274600	30
20"	274680	226100611	18X9	8X180	5.000	0	125.20	3,750	274611	30
	274681	226100612	20X9	5X5	5.000	0	71.60	2,500	274595	35
	274682	226100613	20X9	5X5.5	5.000	0	108.10	2,500	274596	35
	274683	226100614	20X9	5X150	5.000	0	110.10	2,500	274596	35
	274684	226100615	20X9	6X135	5.000	0	87.10	2,500	274598	35
	274685	226100616	20X9	6X5.5	5.000	0	108.10	2,500	274599	35
	274686	226100617	20X9	8X6.5	5.000	0	125.20	3,750	274600	37
	274687	226100618	20X9	8X170	5.000	0	125.20	3,750	274600	37
274688	226100619	20X9	8X180	5.000	0	125.20	3,750	274611	37	

ALL SPECIFICATIONS SUBJECT TO CHANGE WITHOUT NOTICE.

ALL-NEW
MT OPEN 5

MT PRO SERIES WHEELS

FINISH: SATIN BLACK



SHOWN: SATIN BLACK FINISH

WHEEL FEATURES



A SHARP, BOLD, AND MODERN 5-SPOKE DESIGN



MODERN M/T TREAD PRESS-IN CAP



AVAILABLE IN POPULAR 17", 18", 20" WHEEL DIAMETERS

ALL-NEW
MT CANYON

MT CLASSIC SERIES WHEELS

FINISH: POLISHED



SHOWN: POLISHED FINISH

WHEEL FEATURES



A REIMAGINED 1960'S MICKEY THOMPSON WHEEL STYLE for today's modern rigs



CLASSIC STEP LIP DESIGN



FITMENTS for classic and modern trucks and SUVs



15", 16", AND 17" DIAMETER OPTIONS with unique widths for optimal stance enhancement

The **MT OPEN 5** is a wheel designed for trucks and SUVs, perfect for adventurers who want to stand out. Featuring a modern 5-spoke design, a 2-step lip, and a Satin Black finish for a bold, clean look.

WHEEL DIAMETER	MATERIAL NUMBER	PRODUCT CODE	SIZE	BOLT CIRCLE	BACK SPACE INCHES	OFFSET MM	HUB BORE MM	MAX LOAD LBS	REPLACEMENT CAP	APPROX. WT. LBS.
17"	274270	226100383	17X9	5X5	4.530	-12	71.60	2,500	274690	23
	274531	226100384	17X9	5X5.5	4.530	-12	108.10	2,500	274689	23
	274532	226100385	17X9	6X120	4.800	-5	67.00	2,500	274691	23
	274534	226100387	17X9	6X135	4.530	-12	87.10	2,500	274690	23
	274535	226100388	17X9	6X5.5	5.000	0	108.10	2,500	274689	23
	274536	226100389	17X9	6X5.5	4.530	-12	108.10	2,500	274689	23
18"	274537	226100390	18X9	5X5	4.530	-12	71.60	2,500	274690	24
	274538	226100391	18X9	5X5.5	5.000	0	108.10	2,500	274689	24
	274539	226100392	18X9	5X150	5.000	0	110.10	2,500	274689	24
	274540	226100393	18X9	6X120	4.800	-5	67.00	2,500	274691	24
	274541	226100394	18X9	6X135	5.000	0	87.10	2,500	274690	24
	274542	226100395	18X9	6X5.5	5.000	0	108.10	2,500	274689	24
20"	274543	226100396	20X9	5X5	5.000	0	71.60	2,500	274690	29
	274544	226100397	20X9	5X5.5	5.000	0	108.10	2,500	274689	29
	274545	226100398	20X9	5X150	5.000	0	110.10	2,500	274689	29
	274546	226100399	20X9	6X135	5.000	0	87.10	2,500	274690	29
	274547	226100400	20X9	6X5.5	5.000	0	108.10	2,500	274689	29

ALL SPECIFICATIONS SUBJECT TO CHANGE WITHOUT NOTICE.

The **MT CANYON** combines vintage Medallion-inspired design with modern engineering in a new truck and SUV wheel. A 2-step lip updates the classic 5-hole slot for a tough, aggressive look. Available in a Polished finish.

WHEEL DIAMETER	MATERIAL NUMBER	PRODUCT CODE	SIZE	BOLT CIRCLE	BACK SPACE INCHES	OFFSET MM	HUB BORE MM	MAX LOAD LBS	REPLACEMENT PRO CAP	APPROX. WT. LBS.
15"	274516	226100401	15X8	5X4.5	3.630	-22	78.10	2,500	274578	17
	274517	226100402	15X8	5X5.5	3.630	-22	108.10	2,500	274580	17
	274518	226100403	15X8	6X5.5	3.630	-22	108.10	2,500	274603	17
	274519	226100404	15X10	5X4.5	3.730	-45	78.10	2,500	274578	17
	274520	226100405	15X10	5X5.5	3.730	-45	108.10	2,500	274580	17
	274621	226100406	15X10	6X5.5	3.730	-45	108.10	2,500	274603	17
	274622	226100407	15X12	5X4.5	3.630	-73	78.10	2,500	274578	21
	274623	226100408	15X12	5X5.5	3.630	-73	108.10	2,500	274580	21
	274624	226100409	15X12	6X5.5	3.630	-73	108.10	2,500	274603	21
	274625	226100410	16X8	5X4.5	4.500	0	78.10	2,500	274578	19
16"	274626	226100411	16X8	5X5.5	4.030	-12	108.10	2,500	274580	19
	274627	226100412	16X8	6X5.5	4.500	0	108.10	2,500	274603	19
	274628	226100413	16X8	6X5.5	4.030	-12	108.10	2,500	274603	19
	274629	226100414	16X10	6X5.5	4.520	-25	108.10	2,500	274603	20
	274630	226100415	16X10	8X6.5	4.520	-25	125.20	3,500	274604	22
	274631	226100416	16X12	6X5.5	4.530	-50	108.10	2,500	274603	22
	274632	226100417	16X12	8X6.5	4.530	-50	125.20	3,500	274604	23
	274633	226100418	17X9	5X5	4.530	-12	71.60	2,500	274579	23
	274634	226100419	17X9	5X5.5	4.530	-12	108.10	2,500	274580	23
	274635	226100420	17X9	6X120	4.760	-6	67.00	2,500	274601	21
17"	274637	226100422	17X9	6X135	4.530	-12	87.10	2,500	274602	23
	274638	226100423	17X9	6X5.5	5.000	0	108.10	2,500	274603	21
	274639	226100424	17X9	6X5.5	4.530	-12	108.10	2,500	274603	23
	274640	226100425	17X9	8X6.5	5.000	0	125.20	3,500	274604	23
	274641	226100426	17X9	8X170	5.000	0	125.20	3,500	274604	23

ALL SPECIFICATIONS SUBJECT TO CHANGE WITHOUT NOTICE.



CLASSIC III™

MT CLASSIC SERIES WHEELS

FINISHES: POLISHED • SATIN BLACK



SHOWN: POLISHED FINISH

WHEEL FEATURES



UNIQUE SIZING
includes 15x12 and 16x12,
for Polished finish only



NON-CORROSIVE
screw-on center cap



LIFETIME LIMITED WARRANTY
against structural defects



1-YEAR FINISH WARRANTY
for Satin Black finish only

WHEEL FINISHES



POLISHED



SATIN BLACK

The Mickey Thompson **CLASSIC III™** wheel features the classic 8-Hole design in a highly polished finish that includes matching polished hand holes. The debossed M/T logo is our assurance of quality, strength and dependability. Available in a Polished finish and a Satin Black finish.

WHEEL DIAMETER	MATERIAL NUMBER	PRODUCT CODE	SIZE	BOLT CIRCLE	BACK SPACE INCHES	OFFSET MM	HUB BORE MM	MAX LOAD LBS	REPLACEMENT CAP	APPROX. WT. LBS.
CLASSIC III™ - POLISHED										
15"	250325	226100036	15X8	5X4.50	3.625	-22	81.48	1,900	250367	19
	250326	226100037	15X8	5X5.50	3.625	-22	106.50	1,900	250368	18
	250328	226100039	15X8	6X5.50	3.625	-22	106.10	1,900	250369	18
	250329	226100040	15X10	5X4.50	3.625	-45	81.48	1,900	250367	22
	250330	226100041	15X10	5X5.50	3.625	-45	106.50	2,500	250368	21
	250331	226100042	15X10	6X5.50	3.625	-45	106.10	2,500	250369	22
16"	250332	226100043	15X12	5X5.50	3.625	-73	106.50	2,500	250368	24
	250333	226100044	15X12	6X5.50	3.625	-73	106.10	2,500	250369	24
	250336	226100047	16X8	5X4.50	4.500	0	81.48	1,900	250367	23
	250337	226100048	16X8	5X5.50	4.500	0	106.50	2,500	250368	23
	250338	226100049	16X8	6X5.50	4.500	0	106.10	2,500	250369	23
	250339	226100050	16X8	6X5.50	3.625	-22	106.10	2,500	250369	25
16"	250340	226100051	16X8	8X6.50	4.000	-12	125.20	3,250	250370	25
	250341	226100052	16X8	8X170	4.000	-12	125.20	3,500	250372	25
	250342	226100053	16X10	6X5.50	4.500	-25	106.10	2,500	250369	26
	250343	226100054	16X10	8X6.50	4.000	-25	125.20	3,250	250370	27
	250344	226100055	16X10	8X170	4.500	-25	125.20	3,500	250372	27
	250345	226100056	16X12	8X6.50	4.500	-50	125.20	3,250	250370	29
17"	250346	226100057	16X12	8X170	4.500	-50	125.20	3,500	250372	30
	250347	226100058	17X9	5X5.00	4.500	-12	78.08	2,500	250367	30
	250348	226100059	17X9	5X5.50	4.500	-12	106.50	2,500	250368	29
	250290	226100061	17X9	6X5.50	4.500	-12	106.10	2,500	250369	29
	250431	226100062	17X9	8X6.50	5.000	0	125.20	3,250	250370	27
	250432	226100063	17X9	8X170	5.000	0	125.20	3,500	250372	27
CLASSIC III™ - SATIN BLACK										
15"	250439	226100069	15X8	5X4.50	3.625	-22	81.48	1,900	250358	19
	250440	226100070	15X8	5X5.50	3.625	-22	106.50	1,900	250359	19
	250441	226100071	15X8	6X5.50	3.625	-22	106.10	1,900	250360	19
	250442	226100072	15X10	5X4.50	3.625	-45	81.48	1,900	250358	22
16"	250443	226100073	15X10	5X5.50	3.625	-45	106.50	2,500	250359	21
	250444	226100074	16X8	6X5.50	4.500	0	106.10	2,500	250360	23
	250445	226100075	16X8	8X6.50	4.000	-12	125.20	3,250	250365	25
17"	250446	226100076	17X9	5X5.00	4.500	-12	78.08	2,500	250358	30
	250447	226100077	17X9	5X5.50	4.500	-12	106.50	2,500	250359	29
	250448	226100078	17X9	6X5.50	4.500	-12	106.10	2,500	250360	29
	250449	226100079	17X9	8X6.50	5.000	0	125.20	3,250	250365	27

OPTIONAL OPEN CAPS AVAILABLE FOR 5X5.5, 6X5.5 & 8X6.5 BOLT CIRCLES. FOR ALL 6X5.5 BOLT CIRCLE WHEELS: HUB CENTERING RING INCLUDED FOR LATE MODEL CHEVROLET/GMC APPLICATIONS. CLASSIC SERIES WHEELS ARE NOT COMPATIBLE WITH 1986 AND EARLIER JEEP® CJ MODELS (60-DEGREE) BULGE ACORN (CONE BULGE) SEAT LUG NUTS REQUIRED. MICKEY THOMPSON RECOMMENDS DUPLEX BULGE ACORN LUG NUTS ON VEHICLES OF GVWR OF 6,500 LBS. OR GREATER. CENTER CAPS ARE NOT AVAILABLE FOR CERTAIN APPLICATIONS INCLUDING 1997 & EARLIER FORD 3/4 & 1-TON PICKUPS, 2002 & EARLIER DODGE/RAM 3/4 & 1-TON PICKUPS, 1986 & EARLIER JEEP® CJ MODELS & EARLIER TOYOTA LAND CRUISER MODELS. NOT APPROVED FOR USE ON 2022 AND NEWER TOYOTA TUNDRA AND 2023 AND NEWER TOYOTA SEQUOIA. SEE PAGE 52 FOR CAP INFORMATION. ALL SPECIFICATIONS SUBJECT TO CHANGE WITHOUT NOTICE.

SIDEBITER® II

MT CLASSIC SERIES WHEELS

FINISH: SATIN BLACK



SHOWN: SATIN BLACK FINISH

WHEEL FEATURES



CENTER CAP
provides easy access to locking hubs



NON-CORROSIVE
screw-on center cap



LIFETIME LIMITED WARRANTY
against structural defects



1-YEAR FINISH WARRANTY

CLASSIC BAJA LOCK™

MT CLASSIC SERIES WHEELS

FINISH: SATIN BLACK



SHOWN: SATIN BLACK FINISH

WHEEL FEATURES



CENTER CAP
provides easy access to locking hubs



NON-CORROSIVE
screw-on center cap



LIFETIME LIMITED WARRANTY
against structural defects



1-YEAR FINISH WARRANTY

The Mickey Thompson **SIDEBITER® II** is styled after the revolutionary “tread-on-the-sidewall” Mickey Thompson Sidebiter tire design.

WHEEL DIAMETER	MATERIAL NUMBER	PRODUCT CODE	SIZE	BOLT CIRCLE	BACK SPACE INCHES	OFFSET MM	HUB BORE MM	MAX LOAD LBS	REPLACEMENT CAP	APPROX. WT. LBS.
15"	250539	226100125	15X8	5X4.50	3.625	-22	81.51	2,000	250398	23
	250542	226100128	15X10	5X4.50	3.625	-48	81.51	2,000	250398	28
16"	250545	226100131	16X8	6X5.50	4.500	0	106.10	2,600	250395	26
	250546	226100132	16X8	8X6.50	4.500	0	125.20	3,640	250396	28
17"	250548	226100134	17X9	5X5.00	4.500	-12	78.11	2,600	250398	33
	250551	226100137	17X9	6X5.50	5.000	0	106.10	2,600	250395	31
22"	250576	226100152	22X10	8X6.50	5.000	-12	125.22	3,640	250396	51
	250577	226100153	22X10	8X170	5.000	-12	125.22	3,640	250396	51
	250560	226100146	22X12	8X170	4.750	-44	125.22	3,640	250396	57
	250571	226100147	22X12	8X180	5.250	-32	124.31	3,640	250396	56

OPTIONAL OPEN CAPS AVAILABLE FOR 5X5.5, 6X5.5 & 8X6.5 BOLT CIRCLES. FOR ALL 6X5.5 BOLT CIRCLE WHEELS: HUB CENTERING RING INCLUDED FOR LATE MODEL CHEVROLET/GMC APPLICATIONS. CLASSIC SERIES WHEELS ARE NOT COMPATIBLE WITH 1986 AND EARLIER JEEP® CJ MODELS. (60-DEGREE) BULGE ACORN (CONE BULGE) SEAT LUG NUTS REQUIRED. MICKEY THOMPSON RECOMMENDS DUPLEX BULGE ACORN LUG NUTS ON VEHICLES OF GVWR OF 6,500 LBS. OR GREATER. CENTER CAPS ARE NOT AVAILABLE FOR CERTAIN APPLICATIONS INCLUDING 1997 & EARLIER FORD 3/4 & 1-TON PICKUPS, 2002 & EARLIER DODGE/RAM 3/4 & 1-TON PICKUPS, 1986 & EARLIER JEEP® CJ MODELS & EARLIER TOYOTA LAND CRUISER MODELS. NOT APPROVED FOR USE ON 2022 AND NEWER TOYOTA TUNDRA AND 2023 AND NEWER TOYOTA SEQUOIA. SEE PAGE 52 FOR CAP INFORMATION. ALL SPECIFICATIONS SUBJECT TO CHANGE WITHOUT NOTICE.

The Mickey Thompson **CLASSIC BAJA LOCK™** wheel features the classic 8-hole design in a matte black finish with a protective clear coat.

WHEEL DIAMETER	MATERIAL NUMBER	PRODUCT CODE	SIZE	BOLT CIRCLE	BACK SPACE INCHES	OFFSET MM	HUB BORE MM	MAX LOAD LBS	REPLACEMENT CAP	APPROX. WT. LBS.
15"	250152	226100003	15X8	5X4.50	3.625	-22	81.48	2,000	248921	21
	250154	226100005	15X8	6X5.50	3.625	-22	106.10	2,000	250225	20
	250155	226100006	15X10	5X4.50	3.625	-45	81.48	2,000	248921	23
16"	250157	226100008	15X10	6X5.50	3.625	-45	106.10	2,600	250225	22
	250174	226100015	16X8	6X5.50	4.500	0	106.10	2,600	250225	24
	250176	226100017	16X8	8X6.50	4.000	-12	125.20	3,250	250273	27
16"	250178	226100019	16X10	6X5.50	4.500	-25	106.10	2,600	250225	28
	250179	226100020	16X10	8X6.50	4.500	-25	125.20	3,250	250273	29
	250183	226100024	17X9	5X5.00	4.500	-12	78.08	2,600	248921	31
17"	250184	226100025	17X9	5X5.50	4.500	-12	106.48	2,600	250210	31
	250186	226100027	17X9	6X5.50	4.500	-12	106.10	2,600	250225	30
	250187	226100028	17X9	8X6.50	5.000	0	125.20	3,250	250273	29

OPTIONAL OPEN CAPS AVAILABLE FOR 5X5.5, 6X5.5 & 8X6.5 BOLT CIRCLES. FOR ALL 6X5.5 BOLT CIRCLE WHEELS: HUB CENTERING RING INCLUDED FOR LATE MODEL CHEVROLET/GMC APPLICATIONS. CLASSIC SERIES WHEELS ARE NOT COMPATIBLE WITH 1986 AND EARLIER JEEP® CJ MODELS. (60-DEGREE) BULGE ACORN (CONE BULGE) SEAT LUG NUTS REQUIRED. MICKEY THOMPSON RECOMMENDS DUPLEX BULGE ACORN LUG NUTS ON VEHICLES OF GVWR OF 6,500 LBS. OR GREATER. CENTER CAPS ARE NOT AVAILABLE FOR CERTAIN APPLICATIONS INCLUDING 1997 & EARLIER FORD 3/4 & 1-TON PICKUPS, 2002 & EARLIER DODGE/RAM 3/4 & 1-TON PICKUPS, 1986 & EARLIER JEEP® CJ MODELS & EARLIER TOYOTA LAND CRUISER MODELS. NOT APPROVED FOR USE ON 2022 AND NEWER TOYOTA TUNDRA AND 2023 AND NEWER TOYOTA SEQUOIA. SEE PAGE 52 FOR CAP INFORMATION. ALL SPECIFICATIONS SUBJECT TO CHANGE WITHOUT NOTICE.

WHEEL CAPS

MICKEY THOMPSON WHEEL REPLACEMENT CAPS

CLASSIC PRO, CANYON PRO, & CANYON CAP - POLISHED FINISH



MATERIAL #	PRODUCT CODE	CAP ASSEMBLY	BOLT CIRCLE	OUTER DIAMETER INCHES	LENGTH INCHES
274578	224400121	BOLT ON CLOSED	5X4.5	4.28	1.47
274579	224400122	BOLT ON CLOSED	5X5	4.77	1.52
274580	224400123	BOLT ON CLOSED	5X5.5, 5X150	5.28	1.59
274601	224400124	BOLT ON CLOSED	6X120	4.50	1.47
274602	224400125	BOLT ON CLOSED	6X135	5.09	1.46
274603	224400126	BOLT ON CLOSED	6X5.5	5.28	1.59
274604	224400127	BOLT ON CLOSED	8X6.5, 8X170	6.17	3.07
274605	224400128	BOLT ON CLOSED	8X180	6.75	2.95

CLASSIC PRO & CANYON PRO CAP - SATIN BLACK FINISH



MATERIAL #	PRODUCT CODE	CAP ASSEMBLY	BOLT CIRCLE	OUTER DIAMETER INCHES	LENGTH INCHES
274693	224400130	BOLT ON CLOSED	5X5	4.77	1.52
274694	224400131	BOLT ON CLOSED	5X5.5, 5X150	5.28	1.59
274695	224400132	BOLT ON CLOSED	6X120	4.50	1.47
274696	224400133	BOLT ON CLOSED	6X135	5.09	1.46
274697	224400134	BOLT ON CLOSED	6X5.5	5.28	1.59
274698	224400135	BOLT ON CLOSED	8X6.5, 8X170	6.17	3.07
274699	224400136	BOLT ON CLOSED	8X180	6.75	2.95

CLASSIC PRO & CANYON PRO CAP - SATIN BRONZE FINISH



MATERIAL #	PRODUCT CODE	CAP ASSEMBLY	BOLT CIRCLE	OUTER DIAMETER INCHES	LENGTH INCHES
274595	224400138	BOLT ON CLOSED	5X5	4.77	1.52
274596	224400139	BOLT ON CLOSED	5X5.5, 5X150	5.28	1.59
274597	224400140	BOLT ON CLOSED	6X120	4.50	1.47
274598	224400141	BOLT ON CLOSED	6X135	5.09	1.46
274599	224400142	BOLT ON CLOSED	6X5.5	5.28	1.59
274600	224400143	BOLT ON CLOSED	8X6.5, 8X170	6.17	3.07
274611	224400144	BOLT ON CLOSED	8X180	6.75	2.95

MT OPEN 5 - SATIN BLACK FINISH



MATERIAL #	PRODUCT CODE	CAP ASSEMBLY	BOLT CIRCLE	OUTER DIAMETER INCHES	LENGTH INCHES
274689	224400117	SNAP IN CLOSED	5X5.5, 5X150, 6X5.5	4.15	0.45
274690	224400118	SNAP IN CLOSED	5X5, 6X135	3.62	0.44
274691	224400119	SNAP IN CLOSED	6X120	2.76	0.45

ALL SPECIFICATIONS SUBJECT TO CHANGE WITHOUT NOTICE

CLASSIC III™ CAP - POLISHED FINISH



MATERIAL #	PRODUCT CODE	CAP ASSEMBLY	BOLT CIRCLE	OUTER DIAMETER INCHES	LENGTH INCHES
250367	224400040	BOLT ON CLOSED CAP	5 X 4.5/5.0	3.35	3.11
250368	224400042	BOLT ON CLOSED CAP	5 X 5.5	4.41	3.07
250371	224400045	BOLT ON OPEN CAP	5 X 5.5	4.41	2.76
250375	224400049	BOLT ON CLOSED CAP	6 X 135	4.13	2.84
250369	224400043	BOLT ON CLOSED CAP	6 X 5.5	4.37	2.87
250373	224400047	BOLT ON OPEN CAP	6 X 5.5	4.37	3.54
250370	224400044	BOLT ON CLOSED CAP	8 X 6.5	5.32	2.64
250372	224400046	BOLT ON CLOSED CAP - TALL	8 X 170	5.32	4.53
250374	224400048	BOLT ON OPEN CAP	8 X 6.5/170	5.32	3.15

CLASSIC III™ CAP - SATIN BLACK FINISH



MATERIAL #	PRODUCT CODE	CAP ASSEMBLY	BOLT CIRCLE	OUTER DIAMETER INCHES	LENGTH INCHES
250358	224400031	BOLT ON CLOSED CAP	5 X 4.5/5.0	3.35	3.11
250359	224400032	BOLT ON CLOSED CAP	5 X 5.5	4.41	3.07
250361	224400034	BOLT ON OPEN CAP	5 X 5.5	4.41	2.76
250360	224400033	BOLT ON CLOSED CAP	6 X 5.5	4.37	2.87
250362	224400035	BOLT ON OPEN CAP	6 X 5.5	4.37	3.54
250365	224400038	BOLT ON CLOSED CAP	8 X 6.5	5.32	2.64
250366	224400039	BOLT ON CLOSED CAP - TALL	8 X 6.5	5.32	4.53
250363	224400036	BOLT ON OPEN CAP	8 X 6.5/170	5.32	3.15

CLASSIC BAJA LOCK™ CAP



MATERIAL #	PRODUCT CODE	CAP ASSEMBLY	BOLT CIRCLE	OUTER DIAMETER INCHES	LENGTH INCHES
248921	224400001	BOLT ON CLOSED CAP	5 X 4.5/5.0	3.11	3.11
250210	224400002	BOLT ON CLOSED CAP	5 X 5.5	4.41	3.07
250276	224400006	BOLT ON CLOSED CAP	6 X 135	4.13	2.84
250225	224400003	BOLT ON CLOSED CAP	6 X 5.5	4.37	2.87
250273	224400004	BOLT ON CLOSED CAP	8 X 6.5	6.81	2.64
250275	224400005	BOLT ON CLOSED CAP - TALL	8 X 170	6.81	4.53

SIDEBITER® II CAP



MATERIAL #	PRODUCT CODE	CAP ASSEMBLY	BOLT CIRCLE	OUTER DIAMETER INCHES	LENGTH INCHES
250398	224400072	BOLT ON POP TOP CAP	5 X 4.5/5.0	4.30	1.50
250394	224400068	BOLT ON POP TOP CAP	5 X 5.50	5.30	1.60
250395	224400069	BOLT ON POP TOP CAP	6 X 135/5.5	5.30	1.60
250396	224400070	BOLT ON POP TOP CAP	8-LUG	6.50	3.20
250397	224400071	BOLT ON POP TOP CAP - TALL	8-LUG	6.50	2.50

ALL SPECIFICATIONS SUBJECT TO CHANGE WITHOUT NOTICE

TIRE WARRANTY

ELIGIBILITY

This warranty applies to the original purchaser of a Mickey Thompson passenger or light truck tire and is not transferable. Eligible tires must be purchased new and must be used on the vehicle which they were originally installed. Additionally, they must be an equivalent or greater load index to that specified by the vehicle manufacturer. For warranty exclusions, please refer to the complete "Mickey Thompson Passenger and Light Truck Limited Warranty" at mickeythompson tires.com or contact Mickey Thompson's technical support department at 1-800-222-9092.

STANDARD COVERAGE

If your Mickey Thompson branded tire becomes unserviceable as a result of an eligible adjustable condition during the first 2/32" of tread wear, it will be replaced with an equivalent new Mickey Thompson tire, FREE OF CHARGE. When the tread is worn more than 2/32", if the product exhibits an eligible adjustable condition, it will be replaced on a pro rated basis. For the tire pro ration schedule, please refer to the complete "Mickey Thompson Passenger and Light Truck Limited Warranty" at mickeythompson tires.com or contact Mickey Thompson's technical support department at 1-800-222-9092. You must present proof of purchase and be the original owner when requesting a replacement for your tire.

A replacement charge may be required in order to obtain a replacement tire. The replacement charge will be determined by multiplying the dealer's current selling price by the percentage of original tread depth worn from the tire. You must pay for mounting, balancing, and any other additional charges, such as taxes or the acceptance of a higher priced replacement tire.

Any Mickey Thompson tire that does not deliver satisfactory service due to a balance, out of round or a ride complaint issue will be replaced without charge within the first 2/32nds of the tire's tread life. After the first 2/32nds the tire is not warrantable for the aforementioned conditions.

TREAD LIFE

When the tread becomes worn to 2/32" (1.6mm) anywhere on the tire (shown by tread wear indicators molded into the tread grooves), the tire is worn out. WARNING—for important safety information, you must read the section titled "Tire Service Life" and Important Tire Safety and Fitment Information Warnings section of this guide. Additional Tire Safety Information is also available at mickeythompson tires.com or from your local dealer.

HOW TO OBTAIN AN ADJUSTMENT

Tire adjustments must be presented to the dealer which originally sold the tire. You must be able to provide proof of purchase and be the original owner when requesting a replacement for your tire. See "Where to Go for Warranty Replacement."

NO ROAD HAZARD COVERAGE

Many dealers sell or provide their own warranty coverage for road hazards and/or repairs. Mickey Thompson does not provide this coverage. Check with your dealer to determine if Road Hazard/Repair coverage is available from them.

TREAD WEAR PROTECTION - ELIGIBILITY

This warranty applies to the original purchaser of a replacement Mickey Thompson light truck tire and is nontransferable. Eligible tires must be purchased new and used on the vehicle which they were originally installed. Proof of purchase is required for all warranty claims. Additionally, they must be the size, load index, and speed rating equivalent

or greater than that specified by the vehicle manufacturer. This warranty applies to the 48 contiguous continental United States, District of Columbia and Canada. For warranty exclusions see "WHAT ISN'T COVERED" in the Mickey Thompson Standard Warranty.

The following Tread Wear Warranty is a prorated warranty (there is no free replacement period) based on mileage received, and is separate from the Standard Coverage & Extra Coverage Warranties just covered. No manufacturer or dealer can guarantee you a certain number of miles from a given tire. Driving habits, driving conditions, tire and vehicle maintenance all play a part in the tread life of a tire and all differ with each purchaser. The following replacement Mickey Thompson Truck tires only are warranted against tread wear out prior to the applicable indicated mileage:

BAJA LEGEND EXP™

+ 50,000-mile Limited Tread Wear Warranty.

BAJA BOSS® A/T

+ 50,000-mile Limited Tread Wear Warranty on LT sizes.

+ 60,000-mile Limited Tread Wear Warranty on SUV sizes.

The Tread Wear warranty is available provided the eligibility above is met and you:

1. Are the original purchaser.
2. Rotate your tires in accordance with prescribed rotation patterns at least every 6,000 miles (10,000 km) and it must be recorded.
3. Present the tire for adjustment.
4. Present the completed rotation record form when requesting an adjustment and your original purchase receipt, date of purchase, vehicle type, model, odometer reading and rotation record are properly recorded. If the tire wears to the tread wear indicators in less than the miles warranted, a pro-rated adjustment will be made according to actual mileage delivered. Your adjustment credit will be determined by dividing the actual mileage delivered by the miles warranted and multiplying the result times the current selling price of an equivalent Mickey Thompson tire. Adjustment credits can only be used toward the purchase of a new Mickey Thompson tire. You must pay for mounting and balancing and any other additional charges, such as taxes or the acceptance of a higher priced replacement tire.

REPLACEMENT WARRANTY

If you receive a replacement tire under the terms of this Warranty, the replacement tire will be covered by the Warranty then currently given by Mickey Thompson for the replacement tire.

WHERE TO GO FOR WARRANTY REPLACEMENT

Contact the Mickey Thompson dealer where the tire was originally purchased for initial inspection. If the dealer which originally sold the tire is no longer available, please contact Mickey Thompson's technical support department via email at tech@mickeythompson tires.com or 1-800-222-9092 for assistance in finding a Mickey Thompson dealer (Proof of purchase will be required) You may also visit our website Dealer Locator.

CONDITIONS AND EXCLUSIONS

Any tire, no matter how well constructed, may fail in service or otherwise become unserviceable due to conditions beyond the control of the manufacturer. Nothing in this Warranty is intended to be a representation by Mickey Thompson that tire failure cannot occur.

TIRES: RADIAL VERSUS BIAS

Bias tires tend to ride and handle differently than radials. Bias ply or bias belted and radial tires should not be mixed on the same vehicle.

NO WARRANTY POLICY RACING TIRES AND TUBES

Mickey Thompson offers racing tires and tubes for sale. These products should be used in racing applications only. Due to the many varied and different conditions to which racing tires and tubes are exposed and because of the manner in which racing is conducted, Mickey Thompson makes absolutely no warranty, expressed or implied, as to the fitness for a general or particular purpose or of merchantability in connection with any offer of sale or sale of racing tires and tubes. "MICKEY THOMPSON RACING TIRES OR TIRES USED IN RACING ARE SOLD AS IS". Not all racing tires are designed, tested or labeled to meet the minimum safety and performance requirements of the Federal Motor Vehicle Safety Standards (FMVSS). Tires that do not meet these Federal safety standards can not be sold for use on public highways and should not be used on any public highway in any manner.

CONSUMER RIGHTS

This warranty does not in any way extend to any consequential or incidental damages or losses. All incidental and consequential damages and losses are hereby expressly disclaimed and excluded from this warranty. There is no other warranty, or liability, expressed or implied, applicable to these products. No representative has the authority to make any representation, promise, or agreement except as stated herein. Some states do not allow exclusion of incidental or consequential damages. As a result, this limitation or exclusion may not apply to you.

This Warranty gives you specific legal rights, and you may also have other rights that vary from state to state.

Please refer to mickeythompson tires.com for the complete "Mickey Thompson Passenger and Light Truck Limited Warranty" or contact Mickey Thompson's technical support department at 1-800-222-9092 for additional information.

Mickey Thompson Tires shall not be liable for any incidental or consequential damages for any breach of warranty, its liability and the purchaser's exclusive remedy being expressly limited to replacement of defective wheel, as herein provided. Replacement will be handled by an authorized Mickey Thompson

Tire Dealer or Mickey Thompson Tire representative. This warranty gives you specific legal rights. You may also have other rights under applicable laws.

FOR SERVICE ASSISTANCE OR INFORMATION CALL OR WRITE TO:

Mickey Thompson Tires
4651 Prosper Drive
Stow, OH 44224

Phone: (330) 928-9092

Fax: (330) 928-0503

WHEEL WARRANTY

Mickey Thompson Tires warrants to the original purchaser that a new M/T Wheel is free from defects in material and workmanship and agrees to replace a M/T Wheel which fails in normal use and service resulting from defects in material and workmanship for the life of the vehicle for which said wheel was intended and purchased for. Mickey Thompson Tires does not warrant any wheel which has been subject to misuse or abuse including the following;

- (a) Using tires which are oversized according to the standards recommended by the Tire and Rim Association, Inc.;
- (b) Loading the wheel beyond the applicable maximum wheel load as specified by Mickey Thompson Tires;
- (c) Any type of racing or activity which subjects wheels to the abuse of racing, whether on the road or off;
- (d) Inflating beyond the maximum specified on any given tire size as specified by Mickey Thompson Performance Tires;
- (e) Changing or altering the original condition of the wheel or by subjecting it to any processing such as welding or straightening.

WHEEL FINISH WARRANTY

1 Year Finish Warranty

Classic III Black, Sidebiter II, Classic Baja Lock, MT Classic Pro, MT Canyon Pro, MT Canyon, MT Open 5. All other wheels - No Finish Warranty

THERE IS NO WARRANTY THAT WHEELS ARE MERCHANTABLE OR SATISFACTORY FOR ANY PARTICULAR PURPOSE NOR IS THERE ANY OTHER WARRANTY EXPRESSED OR IMPLIED EXCEPT AS SET FORTH HEREIN.



4651 PROSPER DRIVE • STOW, OH 44224
(330) 928-9092
TOLL FREE (800) 222-9092

ALL SPECIFICATIONS SUBJECT TO CHANGE WITHOUT NOTICE.
NOT RESPONSIBLE FOR TYPOGRAPHICAL ERRORS.
PRINTED IN USA - 10/2024